



Yonda.



Yonda. Product family.

The name says it all. The name says it all. Yonda stems from “beyond” because this piece of furniture really goes that extra mile.

Neunzig° design studio reinterpreted the archetypal, spacious shell-structure chair to craft an innovative range that meets the needs of today’s and tomorrow’s world. The Yonda range fuses contemporary aesthetics with sophisticated functionality and sustainable materials. The result is an extensive seating solution for diverse areas.

Yonda. Product family.



Yonda multipurpose chairs

Ergonomic design and sustainable materials add up to a versatile item of furniture. Yonda chairs fuse comfort with longevity and ecological responsibility.



Yonda Conference

Yonda Conference redefines how meetings are held. These stylish conference chairs combine comfort, style and functionality to perfection.



Yonda Lounge

The Yonda Lounge chairs and tables are comfortable, classy options. Their timeless design, unparalleled comfort and top quality create versatile settings that foster communication and a chilled atmosphere.



Thanks to the sculptural-looking armrests that curve downward at the front, the biocomposite seat shell looks lightweight and dynamic despite its size. Even the version without upholstery is exceptionally comfortable. With a felt pad, seat cushioning or padding on the inside, it's even more so.



An addition to six colors and four upholstery options for the seat shell, four frame variants make the chair a versatile and very practical piece of furniture. Yonda is ideal for dining rooms, cafeterias, meeting rooms, home offices or an upholstered, bench-type workspace.



What's increasingly becoming a mainstream concern today, has been an integral part of Wilkhahn's corporate culture for decades. Which is why durability, versatility, efficient use of materials and repair capabilities enjoyed top priority during the development of Yonda. What's more, the team used materials that were organic and renewable, or man-made but recyclable.

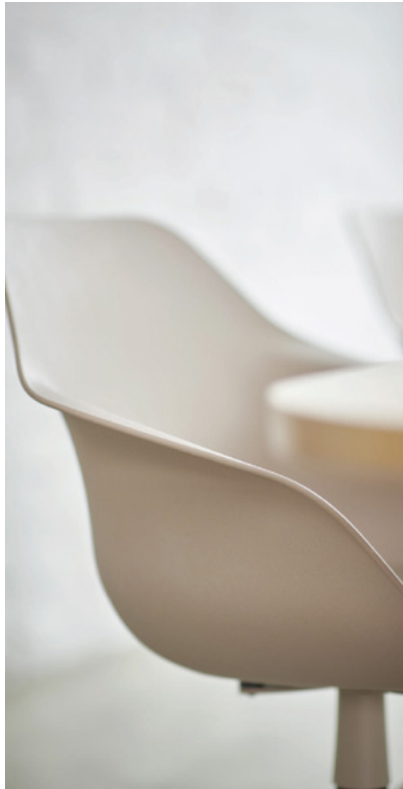
Multipurpose chair 320/32 at a Confair table 440/00, design: Andreas Störiko

**Model 320/10 with a felt pad**

For areas that get dirty easily, such as cafeterias, we recommend the non-slip felt pads, which are easy to remove and clean.

**3D suspension for models with four- and five-star bases**

It could hardly be more simple or effective – the three-dimensional rocking feature for Yonda and Yonda Conference models with four and five-star base frames.



The slight backward tilt of the shell in conjunction with the sloping lines of the armrests lend Yonda a contemporary yet dynamic appearance.



The cross-section of the tapered legs, which splay out, is a semi-oval shape. As a result, it almost looks like a piece of wood that's been molded into shape.



The bent rear legs on the tubular steel frame lend the chair a stylish yet dynamic look.



The optional Y-shaped depression is a reference to the first letter of the chair's name.



Thanks to its rocking capability and height-adjustable gas lift, Yonda's the definition of a chair for the workplace.



The seat shell is made in Germany. It consists of an innovative biocomposite, optionally through-dyed in six, food-safe colors. Some 70% of the material consists of post-consumer recycled polypropylene and 30% locally sourced waste wood. The two are combined to produce a solid, durable but elastic material. It stands apart for its high-quality aesthetic and consistent surface with subtle speckles showing the particles of wood. After a long period in use, it can be turned back into granules to make new products without any quality loss.

The optional felt pad is made of pure wool, the adhesive-free seat upholstery of plywood and polyurethane molded foam (PUR) and the replaceable, thin upholstery element of the padding on the inside is also made of biocomposite granules.



The frames are easy to repair or replace and can be recycled. These are produced from FSC®-certified, oiled oak wood, solvent-free, coated tubular steel or chrome-plated using the environmentally friendly chromiumIII process, or of either coated or ultra polished die-cast aluminum with a stainless steel, swivel-mounted column. The materials are either renewable, or part of a closed-loop recycling process.



People who also want sustainable fabric covers can choose re-wool, a renewable wool fabric, 45% of which is recycled from industrial waste. Oceanic is a particularly hard-wearing cover made of synthetic fibers. It consists of recycled synthetic fibers, 50% of which come from the plastic debris floating in our oceans.



As a result, Yonda underscores our standing as a design and environmental pioneer. We combine first-class seating-furniture design for a diverse range of office spaces and homes with seminal materials and processes that boost an eco-friendly circular economy.



Yonda Conference marries stylish design with superior comfort and sets new standards for conferences and meetings. The taut, full upholstery makes the chair superbly comfortable, lending it a residential appeal and upgrading any conference room. The versatile design options mean colors and fabrics can be tailored to suit preferences. Attractive chairs that blend in with all sorts of settings are the upshot.



Sophisticated design meets consistent sustainability: The shell is crafted from eco friendly biocomposite and the seat cushioning from CFC-free foam. The cover comes in high-quality, breathable and moisture-regulating polyester fabric with 50% recycled fibers. The result is a chair that makes even long conferences so much more relaxing. The cover is crafted to enable sorting to type. The upholstery can also be replaced in the factory – a flexible solution if conference-room requirements alter.

Conference chair 321/23



Yonda Lounge is ideal for anywhere with a focus on comfort and a relaxed atmosphere. Because it's so versatile, the range blends in with all sorts of environments. Flexible settings that encourage people to unwind and communicate are the result. Alongside the comfortable lounge chairs with three frame variants, there's also an ottoman, a swivel-mounted, fully upholstered stool and side tables in two heights.

Lounge chair 322/34 and table 322/6, upholstered stool 322/2 and ottoman 322/1



Yonda Lounge chairs and tables, here with sled base frames coated white, can transform areas in the middle of rooms and hotel lobbies into informal places to meet up or chill out.

Lounge chair 322/14 and tables 322/5 Upholstered bench with backrest with an Insit bench 782/52, design: Wolfgang C. R. Mezger



For the armchair, Yonda's distinctive design with armrests that appear to be one with the chair also comes with a large, fully upholstered seat shell. Just like Yonda, durability due to renewable, recycled and recyclable materials also played a key role in the lounge chair design.

The Yonda Lounge group of a lounge chair with an oak base frame and swivel-mounted upholstered stool is perfect for bookworms. It's the go-to option for environments with a residential appeal and combinable with the Yonda shell chairs.

Lounge chair 322/24 and upholstered stool 322/2



Model 322/44 on casters and with a writing tablet

Designed with the stylish ring-type casters and a writing tablet, Yonda Lounge offers maximum flexibility, mobility and comfort. It's an excellent choice for a range of settings.



Customers can state on the order whether they want the optional writing tablet fitted to the left or right of chairs with four-star bases (models 322/34 and 322/44). The surface is made of hard-wearing, black, through-dyed HPL with chamfered edging and can be rotated 360 degrees on the support. It's perfect as a writing tablet or place to put things.

The backrest's characteristic Y-shaped top stitching reflects the Y for Yonda and provides pleasantly comfortable zones in the backrest. The ergonomically designed support at the bottom of the back and the material's flexibility at the top add up to superior comfort with that feel-good factor.



In typical Wilkhahn style, the Yonda Lounge is craftsmanship at its best. The precise stitching follows the shell's stylish contour and turns the lounge chair into an unforgettable eye-catcher. The upholstered, integrated armrests are a comfortable place to rest arms. Due to the shell's slight tilt and high backrest, the Yonda Lounge chair appears to embrace those sitting on it.



Yonda. Models. Multipurpose chairs.



320/10
Four-leg frame, without upholstery
with a felt pad



320/20
Solid wood base frame
without upholstery



320/31
Visitor chair, swivel-mounted on
casters, with a four-star base,
seat cushioning



320/32
Visitor chair, swivel-mounted
with a four-star base frame,
with padding on the inside,



320/00
Task chair, height-adjustable,
with five-star base frame,
without upholstery

Yonda. Models. Conference.



321/13
Four-leg frame



321/23
Solid wood base frame



321/33
Four-star base frame, swivel-mounted



321/33
Four-star base frame on casters, swivel-mounted



321/03
five-star base, height-adjustable

Yonda. Models. Lounge.



322/14
Sled base, black



322/24
Solid wood base frame



322/34
Four-star base



322/44
Four-star base on casters with swivel-mounted writing tablet



322/1
Ottoman with sled base



322/2
Upholstered stool, swivel-mounted



322/5
Lounge table with a sled base (height 52 cm),



322/6
Lounge table with a sled base (height 42 cm),

Yonda. Seat shell versions.



320/10
without upholstery



320/10
with a felt pad



320/11
with seat cushioning



320/11
with seat cushioning with a Y-shaped depression

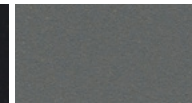


320/12
with padding on the inside

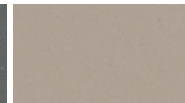
Seat and backrest shells



black



gray



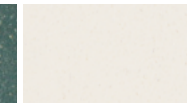
gray-beige



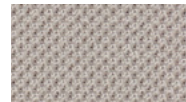
sienna red



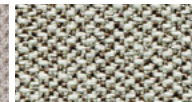
emerald green



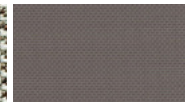
cream white



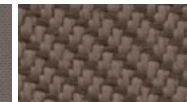
37 Atlantic



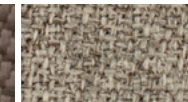
38 Era



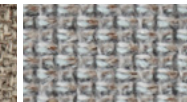
47 Nova



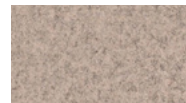
51 Oceanic



54 Step/Step Melange



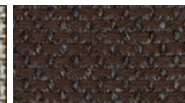
56 Cyber



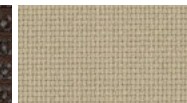
60 Blazer



64 Morph



65 Re-wool



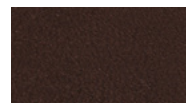
66 Lano



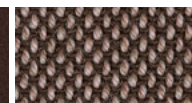
68 Remix



74 Leather



87 Leather




91 Steelcut Trio/
Quartet



92 Credo

The digital sample colors differ from the originals.

 You can find all upholstery material and more colors in our material library.

Yonda. Designs.




321, 322
Fully upholstered

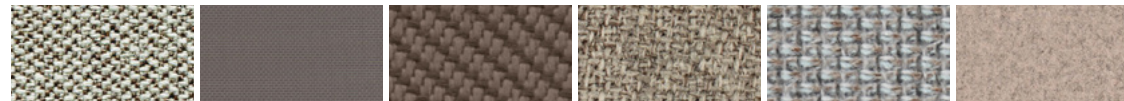


322/5, 322/6

The digital sample colors differ from the originals.

 You can find all upholstery material and more colors in our material library.

Upholstery materials



38 Era

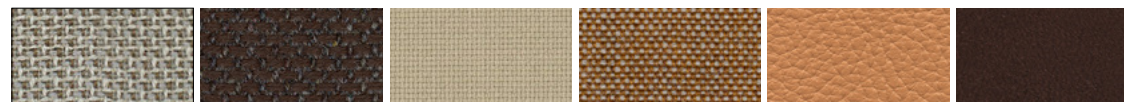
47 Nova

51 Oceanic

54 Step/
Step Melange

56 Cyber

60 Blazer



64 Morph

65 Re-wool

66 Lano

68 Remix

74 Leather

87 Leather



91 Steelcut Trio/
Quartet

92 Credo

Table top groups



Laminates Variant 1 or 2

HPL-Vollkern (High Pressure Laminate), through-dyed
in white or black (soft matte)

Edging



Straight plastic edging, Straight wood edging, solid-core HPL,
chamfered edging

Frame versions



Bright
chrome-plated

black (RAL 9011)

white (RAL 9016)

Yonda. Frame versions.



320, 321
Four-leg frame

Solid wood base
frame

Four-star base
frame

Five-star base
frame



322
Sled base



322
Four star base frame

Frame versions



black (RAL 9011)

gray (Pantone
Cool Gray 10 C)

gray-beige
(Pantone 7530C)

sienna red
(Pantone 3523C)

emerald green
(Pantone 5477C)

cream white
(RAL 9001)



High-luster
polished aluminum

Bright
chrome-plated

Oak, natural oiled
finish

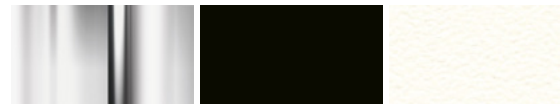
Oak, white, oiled

Oak, lacquered
black

Walnut, natural
oiled finish

Oak, stained
graphite

Frame versions



Bright
chrome-plated

black (RAL 9011)

cream white
(RAL 9001)

Frame versions



High-luster
polished aluminum

black (RAL 9011)

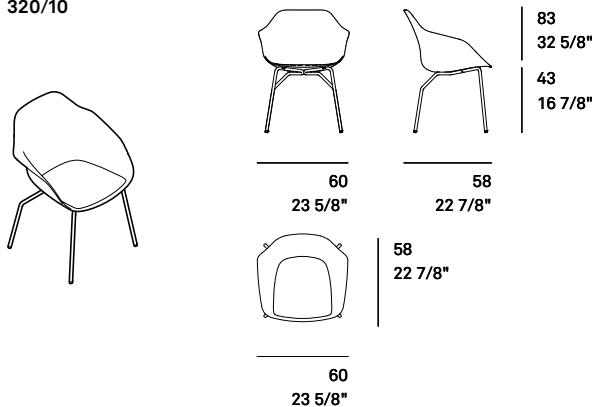
cream white
(RAL 9001)

The digital sample colors differ from the originals.

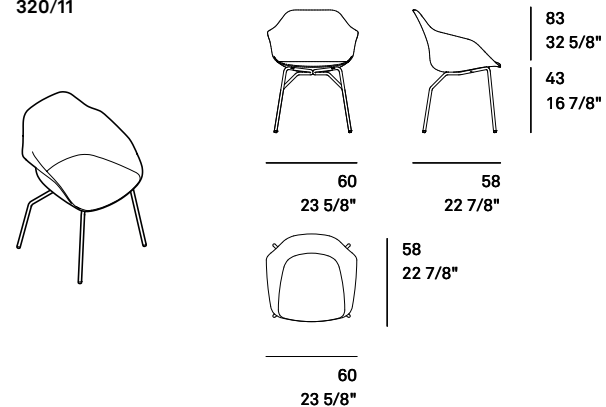
You can find all upholstery material and more colors in our material library.

Yonda. Models and dimensions.

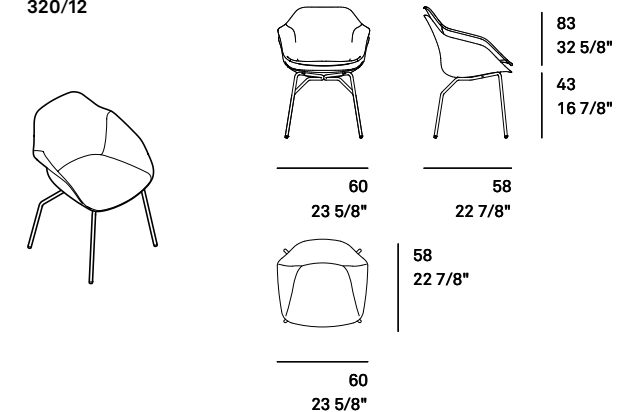
320/10



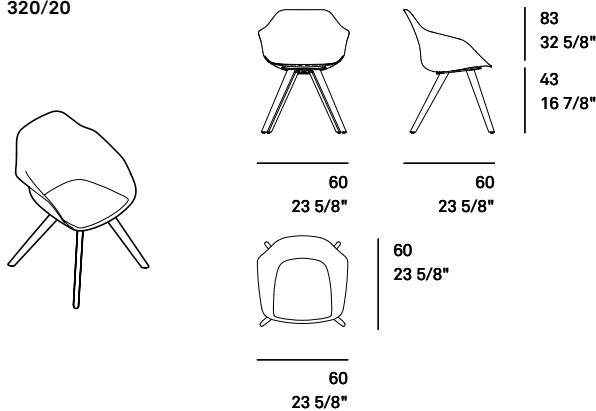
320/11



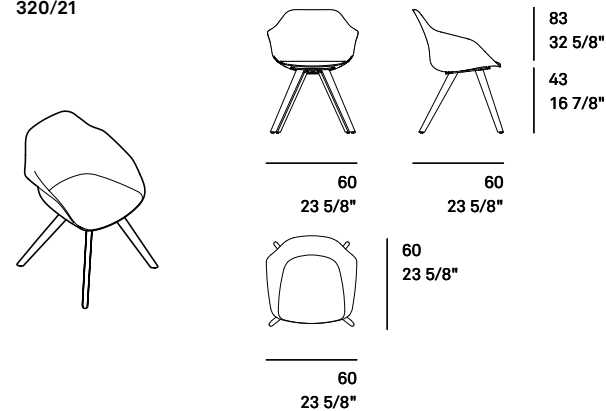
320/12



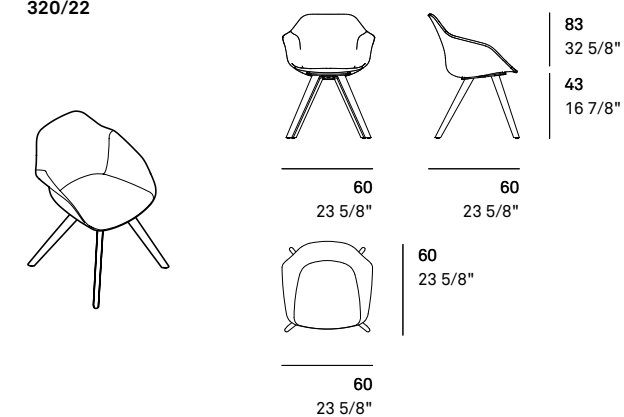
320/20



320/21

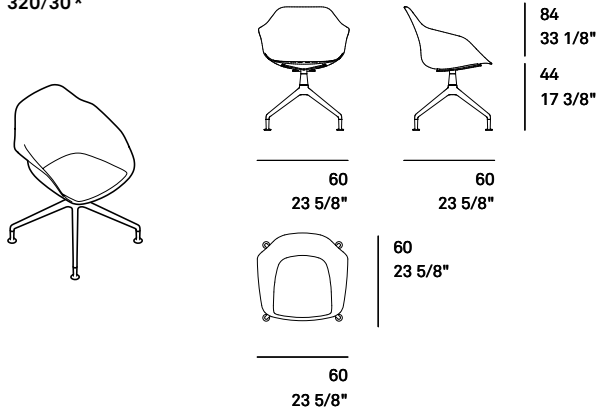


320/22

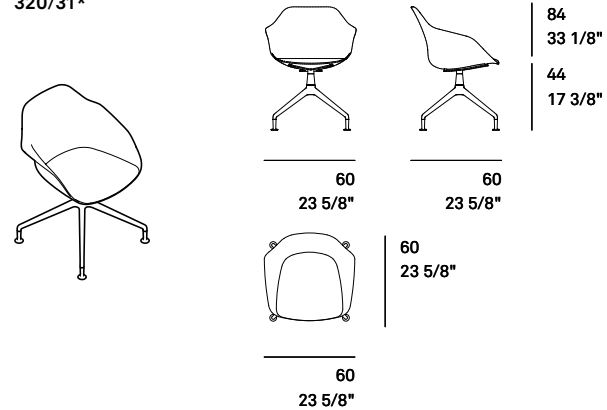


Yonda. Models and dimensions.

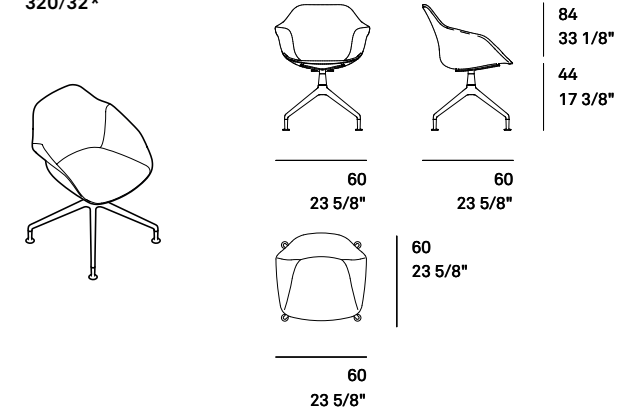
320/30*



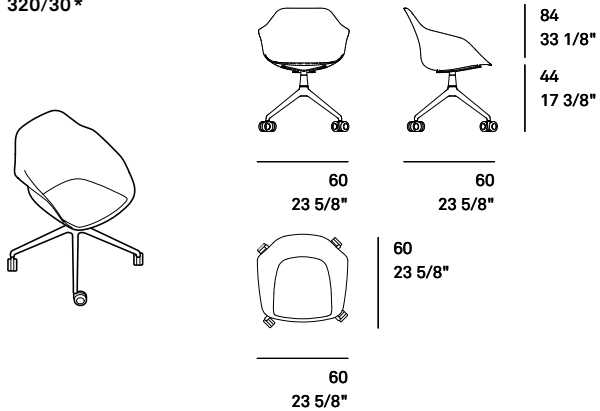
320/31*



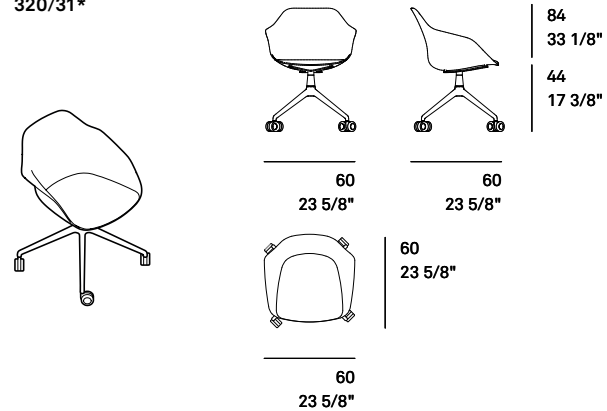
320/32*



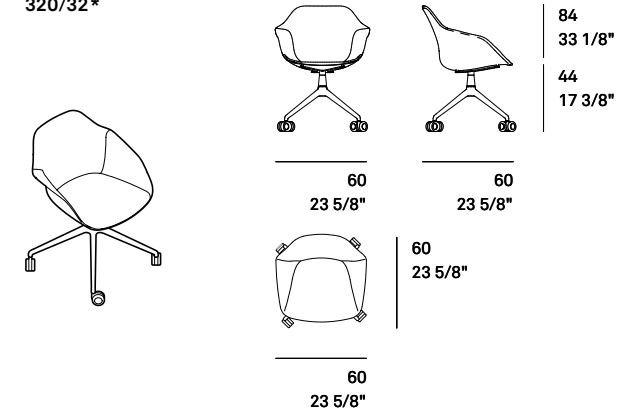
320/30*



320/31*



320/32*

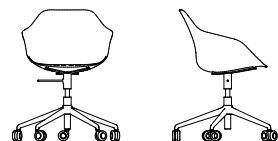


* The height and depth of models with rocking capability can vary slightly when nobody's sitting on them due to the slight backward tilt of the seat shell.

All sizes in metric and imperial measurements. Subject to change.

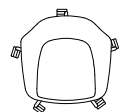
Yonda. Models and dimensions.

320/00*



67
26 3/8"

67
26 3/8"

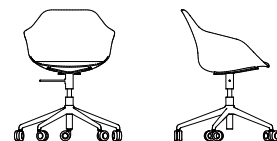
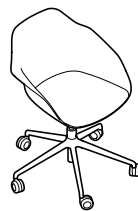


67
26 3/8"

67
26 3/8"

81/91
31 7/8" / 35 7/8"
41/51
16 1/8" / 20 1/8"

320/01*



67
26 3/8"

67
26 3/8"

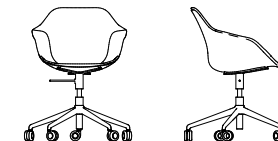


67
26 3/8"

67
26 3/8"

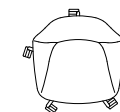
81/91
31 7/8" / 35 7/8"
41/51
16 1/8" / 20 1/8"

320/02*



67
26 3/8"

67
26 3/8"



67
26 3/8"

67
26 3/8"

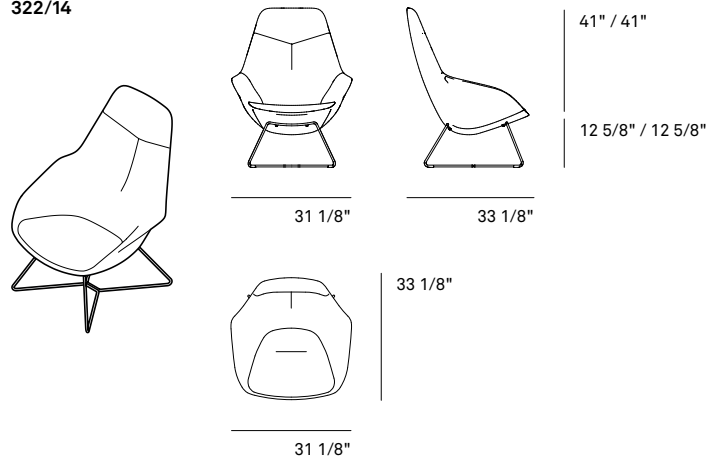
81/91
31 7/8" / 35 7/8"
41/51
16 1/8" / 20 1/8"

* The height and depth of models with rocking capability can vary slightly when nobody's sitting on them due to the slight backward tilt of the seat shell.

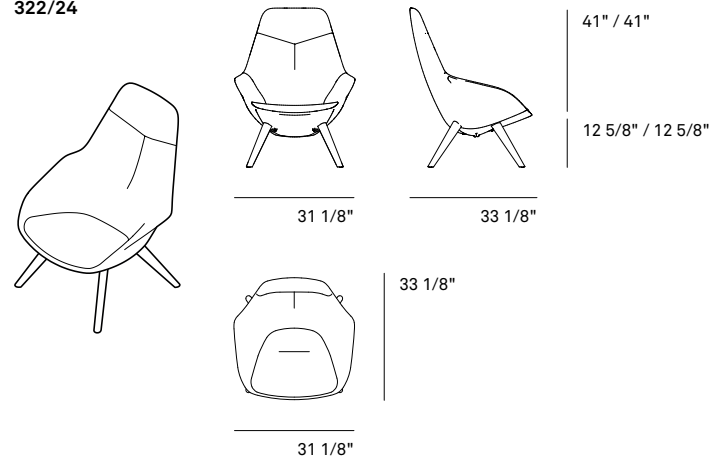
All sizes in metric and imperial measurements. Subject to change.

Yonda Lounge. Models and dimensions.

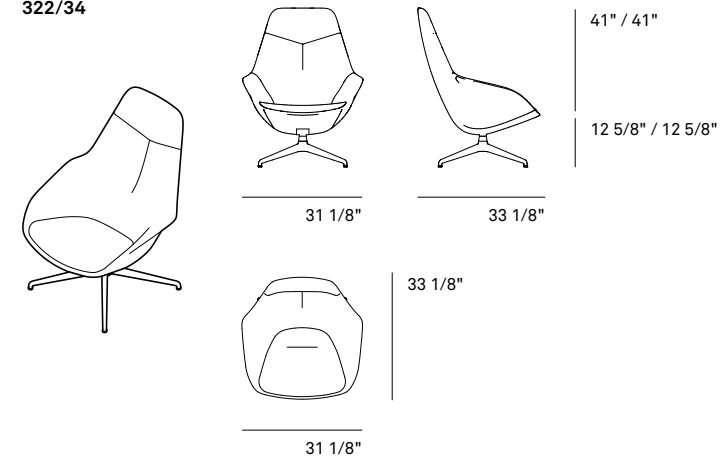
322/14



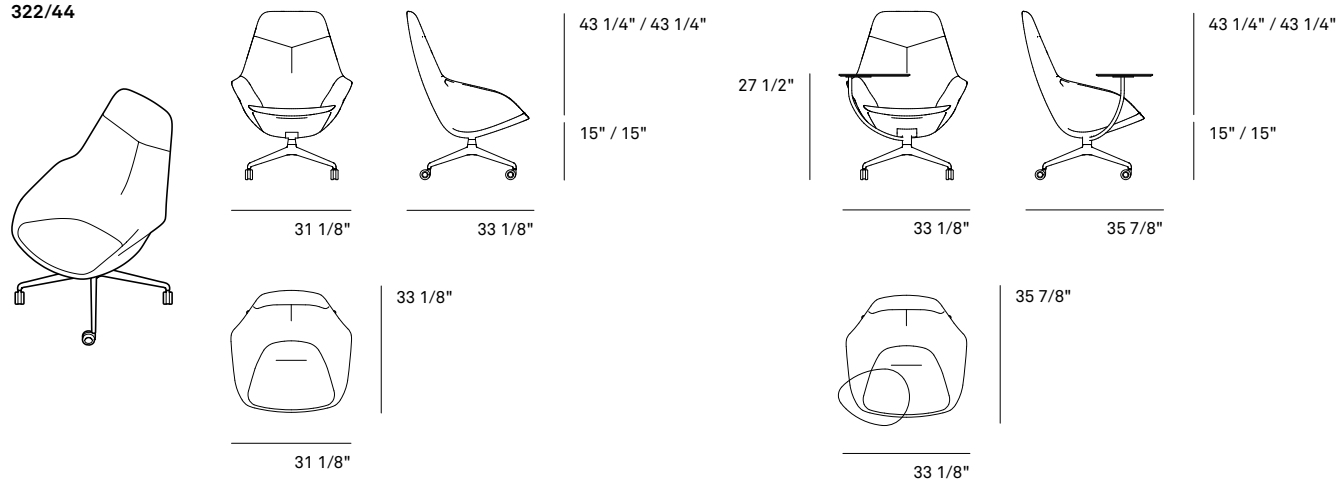
322/24



322/34

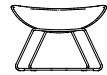


322/44



Yonda Lounge. Models and dimensions.

322/1



25 1/4"



19 5/8"

16 7/8" / 16 7/8"



25 1/4"

19 5/8"

322/2



22 1/2"



17 3/4"

16 7/8" / 16 7/8"



22 1/2"

17 3/4"

322/5

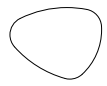


24"



18 7/8"

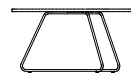
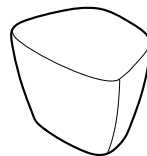
20 1/2" / 20 1/2"



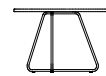
24"

18 7/8"

322/6

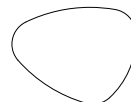


32 1/4"



25 1/4"

16 1/2" / 16 1/2"

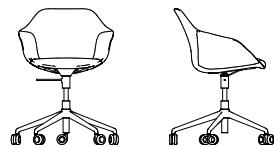
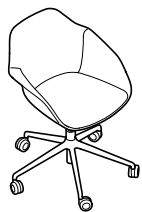


32 1/4"

25 1/4"

Yonda Conference. Models and dimensions.

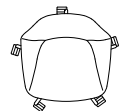
321/03



67
26 3/8"

67
26 3/8"

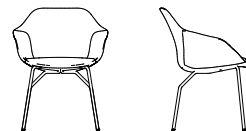
81/91
31 7/8" / 35 7/8"
41/51
16 1/8" / 20 1/8"



67
26 3/8"

67
26 3/8"

321/13



60
23 5/8"

58
22 7/8"

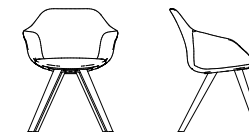
84
33 1/8"
44
17 3/8"



58
22 7/8"

60
23 5/8"

321/23



60
23 5/8"

60
23 5/8"

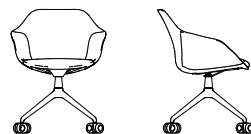
84
33 1/8"
44
17 3/8"



60
23 5/8"

60
23 5/8"

321/33



60
23 5/8"

60
23 5/8"

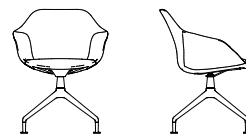
84
33 1/8"
44
17 3/8"



60
23 5/8"

60
23 5/8"

321/33



60
23 5/8"

60
23 5/8"

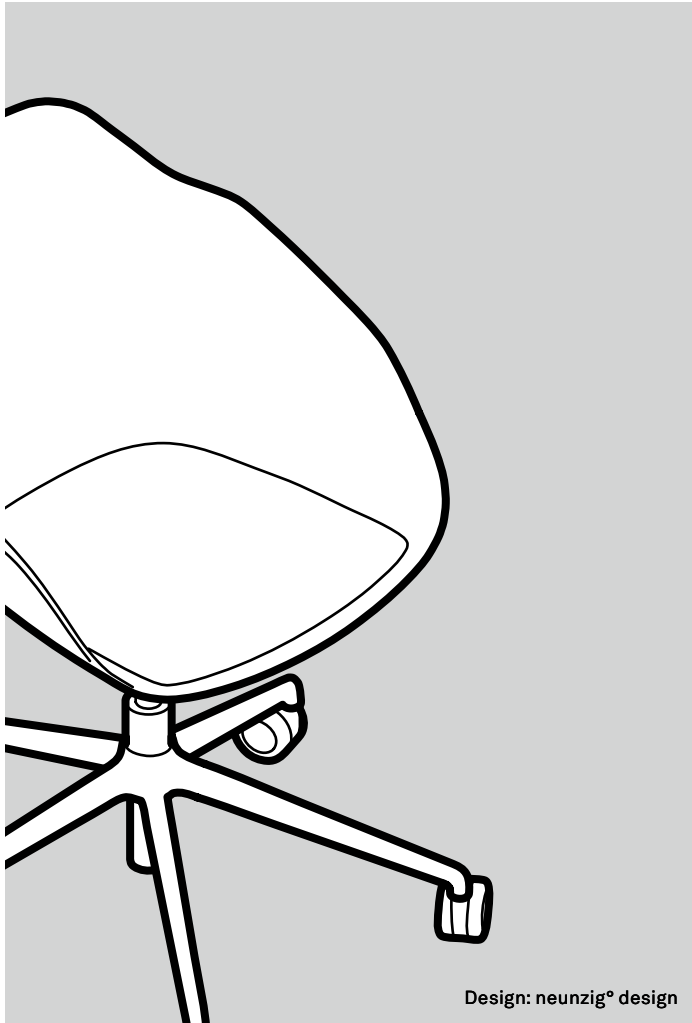
84
33 1/8"
44
17 3/8"



60
23 5/8"

60
23 5/8"

Yonda. Technical details.



Design: neunzig° design

Exceptionally sustainably designed, multipurpose shell-structure chair range with various frame variants for meeting and conference rooms, waiting areas, meeting spaces, bistros and cafeterias, hotel rooms and homes. The chair is exceptionally comfortable thanks to its breathable upholstery materials and 3D suspension. What's more, the fully upholstered shell-structure chair requires virtually no adhesives. As a result, all components can be sorted according to type at the end of the product's life.

Base frame

Four-leg frames

models 320/10, 320/11, 320/12

Tubular steel frame with textured matte finish, coated in black, cream white, gray, gray-beige, emerald green, sienna red or with bright chrome plating (with environmentally friendly chromiumIII oxide). With multipurpose glides made of glide-friendly, black PA 6 (with Teflon) for soft and hard floorings. For sensitive flooring, please order with felt insert (at no additional charge).

Solid wood four-leg frame,

models 320/20, 320/21, 320/22

Legs in FSC®-certified solid oak (natural oiled) or based on the Wilkhahn wood color-stain samples, optionally in solid walnut (with a natural oiled finish). With multipurpose glides made of glide-friendly, black PA 6 (with Teflon) for soft and hard floorings. For sensitive flooring, please order with felt insert (at no additional charge).

Seat bearer made of steel plate with steel rods coated in black with a textured matte finish (RAL 9011), to fit the seat shell onto, as well as the four legs.

Four-star base models

320/30, 320/31, 320/32

Four-star base made of die-cast aluminum, coated with a textured matte finish in black cream white, gray, gray-beige, emerald green, sienna red, or high-luster polished, with a concealed, in-built, swivel-mounted column made of two-part round steel tubing, coated black, optionally with a reset mechanism. Seat bearer made of molded flat steel with tapered steel connecting joint, coated in black with a textured matte finish (RAL 9011) or color-matched with the shell in

a textured matte finish (additional charge). Optionally with a three-dimensional rocking mechanism made of springy flat steel coated with a black textured matte finish (RAL 9011) or color-matched with the shell in a textured matte finish (additional charge).

With steel base glides coated black with a textured matte finish (RAL 9011), color-matched with the shell in a textured matte finish (additional charge) with an integrated gliding surface made of Teflon-coated rubber for hard and soft floors, optionally with a felt insert for sensitive floors.

Optionally with twin-wheel swivel casters with load-dependent braking, made of black polyamide compliant with DIN EN12529 as the standard version for carpets; with gray soft polyurethane tire for hard floors.

Five-star base,

models 320/00, 320/01, 320/02

Five-star base in die-cast aluminum, coated with a textured matte finish in black, cream white, gray, gray-beige, emerald green, sienna red or high-luster polished, with a gas lift with precision-adjustable height, bright chrome-plated or coated black with lever made of steel rod, coated black.

Seat bearer made of molded flat steel with cylindrical connecting joint, coated in black with a textured matte finish (RAL 9011) or color-matched with the shell in a textured matte finish (additional charge).

Optionally with a three-dimensional rocking mechanism made of springy flat steel coated black with a textured matte finish (RAL 9011) or color-matched with the shell in a textured matte finish (additional charge).

Twin-wheel swivel casters with load-dependent braking, made of black polyamide compliant with DIN EN12529 as the standard version for carpets; with gray soft polyurethane tire for hard floors.

Yonda. Technical details.

Seat and backrest

Unitary, ergonomically molded seat shell with armrests made of Biocomposite (70% recycled polypropylene, 30% wood fibers from waste wood). Extra seat cushioning with CFC-free PUR foam. Backrest also comes with extra cut foam upholstery. Fully upholstered, inside with a cover made of 15-mm-thick, breathable and moisture-wicking polyester (50% of which is made from recycled fibers).

Please note

To ensure quality is maintained, we don't offer white leather (74/72). All other standard leather colors are possible.

When exposed to ultra violet rays for long periods of time, the colors of biocomposite shell can change slightly. The subtle speckles, typical of the material, indicate the sustainable nature of the material and do not constitute grounds for complaint.

The same applies to any slight differences in color when Yonda is combined with seat shells made of biocomposite material and other chair models with seat shells made of polypropylene. There can also be slight differences in color between the biocomposite shell and the coated frames.

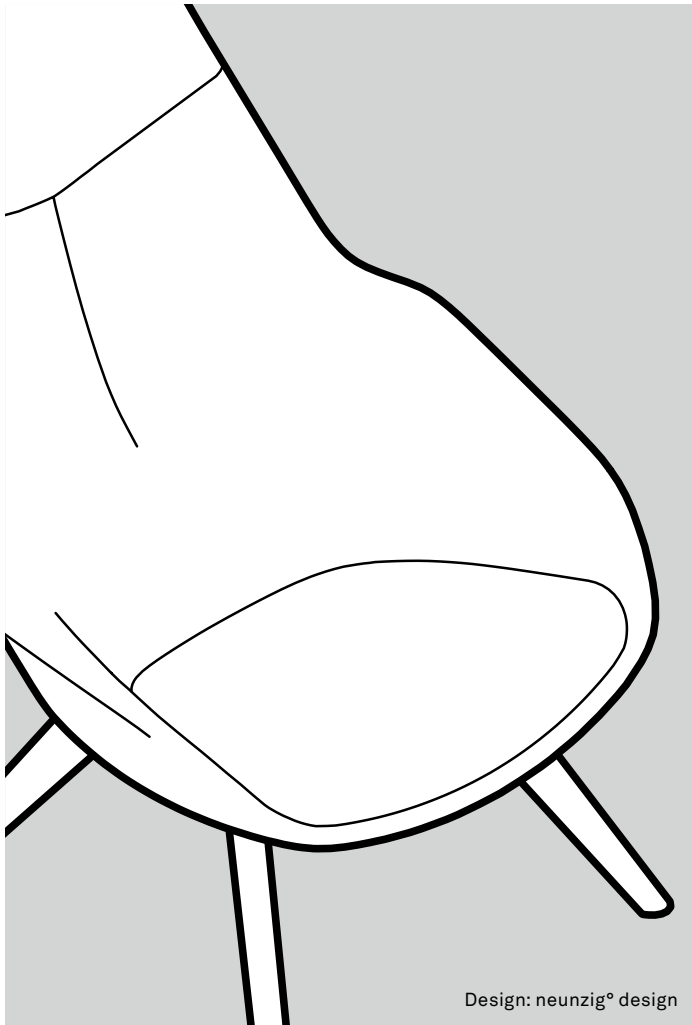
Standards

The multipurpose Yonda Conference chairs comply with the ANSI/BIFMAX5.1 standard.



www.tuv.com
ID 1111265788

Yonda Lounge. Technical details.



Distinctive and comfortable lounge range in a high-quality design, consisting of chairs with three frame variants, matching upholstered stool and ottoman as well as side tables with pebble-shaped table tops. The spacious and organic shape of the fully upholstered shell has a welcoming appeal. It also offers superb comfort thanks to the armrests that are fluidly integrated into the chair, provide support at the bottom and elasticity at the top of the backrest. Ideal for receptions and lobbies, informal communication spaces, superior recreational areas and living spaces.

Lounge chair

Frame

Sled base

model 322/14

Sled base made of steel rod, diameter 12 mm, with a textured matte finish and coated in black, white or with bright chrome plating (made of eco-friendly ChromiumIII oxide). Coated frames as a standard and, if required bright chrome-plated frames optionally come with multipurpose glides made of black polyamide. For sensitive flooring, please order with felt insert (at no additional charge).

Solid wood four-leg frame

model 322/24

Legs in FSC®-certified solid oak (natural oiled) or based on the Wilkhahn wood color-stain samples, optionally in solid walnut (with a natural oiled finish). With multipurpose glides made of glide-friendly, black PA 6 (with Teflon) for soft and hard floorings. For sensitive flooring, please order with felt insert (at no additional charge).

Seat bearer made of steel rods, 18 mm in diameter, coated black with a textured matte finish, for mounting to the seat shell and to the four legs.

Four-star base

models 322/34, 322/44

Four-star base made of die-cast aluminum, coated in black or white with a textured matte finish or high-luster polish. With an integrated, concealed swivel-mounted column made of two pieces of round steel tubing, coated in black or white, optionally with an automatic swivel-return mechanism. Core panel made of steel, coated in black or white with a textured matte finish for mounting the upholstered shell. With multipurpose glides made of glide-friendly, black PA 6 (with Teflon) for soft and hard floorings. For sensitive flooring, please order with felt insert (at no additional charge).

Model 322/44 star base with ring-type casters made of black polyamide compliant with DIN EN12529 as the standard version for carpets: Optionally with gray polyurethane tire for hard flooring (seating height 38 cm, total height 110 cm).

Optionally with drop-shaped writing tablet made of black (soft matte) or white, through-dyed HPL, 12 mm, dimensions 47x37 cm, with chamfered edging all the way round. The writing tablet can be fitted to the support made of round steel tubing, coated with a black or white coating with a textured matte finish, attached to the swivel-mounted column optionally on the left or right of the chair (please specify when ordering). Table top bearer for the writing tablet support always coated black with a textured matte finish. Writing tablet rotates freely on the support.

Seat and backrest

Unitary, ergonomic seat shell with integrated armrests, made of 100% ABS recycled material. Reinforced with steel to provide stability underneath the seat. Shell with CFC-free polyurethane molded foam. Replaceable covers with Y-shaped clamps in the backrest. Separate, replaceable seat cushioning with clamps as covered upholstery element made of molded plywood with molded foam made of CFC-free polyurethane, monofraction sorting possible. Upholstery element screwed on underneath the seat. Non-destructive dismantling possible.

Yonda Lounge. Technical details.

Upholstered stool

Body made of FSC®-compliant plywood attached with screws, with CFC-free polyurethane molded foam. Swivel-mounted upholstered body, with a round base made of PET fleece, 9 mm thick, up to 50% of which is made of recycled material, in anthracite and a black, through-dyed polycarbonate rotating ring attached with screws.

Ottoman

Sled base made of steel rod, diameter 12 mm, with a textured matte finish and coated in black, white or with bright chrome plating (made of eco-friendly ChromiumIII oxide). Coated frames as a standard and, if required bright chrome-plated frames optionally come with multipurpose glides made of black polyamide. For sensitive flooring, please order with felt insert (at no additional charge). Upholstered component made of plywood, with CFC-free polyurethane molded foam. Covers replaceable.

Tables

Frame

Total height 42 or 52 cm, with sled base made of steel rod, diameter 12 mm, coated in black or white with a textured matte finish or bright chrome plating (with environmentally friendly chromiumIII oxide). Coated frames as a standard and, if required bright chrome-plated frames optionally come with multipurpose glides made of black polyamide. For sensitive flooring, please order with felt insert (at no additional charge).

Core material of table top

- Particle board

Table top group 1 – laminate

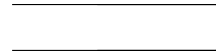
- Table top thickness 17 mm

Variant 1

- Single color based on the Wilkhahn color and surface samples
- color-matched plastic edging
- Wood decor based on the Wilkhahn color and surface samples
- color-matched plastic edging

Variant 2

- Soft matte based on the Wilkhahn color and surface samples
- antifingerprint, anti-reflective and soft-touch surface
- color-matched plastic edging



Straight plastic edging

Table top group 2 – veneer

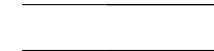
- Table top thickness 17 mm

Variant 1

- Oak, knotty oak or heartwood ash veneer from the Wilkhahn wood color-stain samples
- With straight wood edging, color-matched as far as possible with the veneer

Variant 2

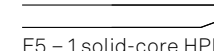
- Walnut, smoked oak or black walnut veneer with sapwood based on the Wilkhahn wood color-stain samples
- With straight wood edging, color-matched as far as possible with the veneer



Straight wood edging

Panel group 7 – HPL through-dyed

- Panel thickness 12 mm
- Table top made of through-dyed HPL (high pressure laminate) in white or with not very reflective soft touch surface with antifingerprint characteristics in soft matte black
- Edging color-matched with the table top



E5 – 1 solid-core HPL, chamfered edging, 4 mm radius

Please note

For quality management reasons, we don't offer white leather (74/72). All other standard leather colors are possible.

Yonda Conference. Technical details.

Exceptionally sustainably designed, multipurpose shell-structure chair range with various frame variants for meeting and conference rooms, waiting areas, meeting spaces, bistros and cafeterias, hotel rooms and homes. The chair is exceptionally comfortable thanks to its breathable upholstery materials and 3D suspension. What's more, the fully upholstered shell-structure chair requires virtually no adhesives. As a result, all components can be sorted according to type at the end of the product's life.

Base frame

Four-leg frame models 321/13

Tubular steel frame with a textured matte finish coated black, cream white, white, gray, gray-beige – also available with bright chrome plating (with environmentally friendly chromiumIII oxide). With multipurpose glides made of glide-friendly, black PA 6 (with Teflon) for soft and hard floorings. For sensitive flooring, please order with felt insert (at no additional charge).

Four-leg frame, solid wood, models 321/23

Legs in FSC®-certified solid oak (natural oiled) or based on the Wilkhahn wood color-stain samples, optionally in solid walnut (with a natural oiled finish). With multipurpose glides made of glide-friendly, black PA 6 (with Teflon) for soft and hard floorings. For sensitive flooring, please order with felt insert (at no additional charge). Seat bearer made of steel plate with steel rods coated in black with a textured matte finish (RAL 9011), to fit the seat shell onto, as well as the four legs.

Four-star base, models 321/33

Four-star base made of die-cast aluminum coated in black, cream white, white, gray, gray-beige with a textured matte finish – also available with a high-luster polish. With a concealed, in-built, swivel-mounted column made of two-part round steel tubing, coated black, optionally with reset mechanism. Seat bearer made of molded flat steel with tapered steel connecting joint, coated black with a textured matte finish (RAL 9011), or color-matched with the frame and a textured matte finish (additional charge). Optionally with three-dimensional rocking mechanism made of sprung flat steel coated black with a textured matte finish (RAL 9011) or color-matched with the frame with a textured matte finish (additional charge).

With base glides made of steel, coated with a black textured matte finish (RAL 9011), or color-matched with the frame with a textured matte finish (additional charge) with a gliding surface made of Teflon-coated rubber for hard and soft floorings, optionally with a felt insert for sensitive floorings.

Optionally with twin-wheel swivel casters with load-dependent braking, made of black polyamide compliant with DIN EN12529 as the standard version for carpets; with gray soft polyurethane tire for hard floors.

Five-star base, models 321/03

Five-star base made of die-cast aluminum with a textured matte finish coated in black, cream white, white, gray, gray-beige – also available with a high-luster polish. With a gas lift with precision-adjustable height, bright chrome-plated or coated black with a lever made of steel rod, coated black.

Seat bearer made of molded flat steel with a cylindrical connection joint, coated with a black textured matte finish (RAL 9011) or coated in the same color as the frame with a textured matte finish (additional charge). Optionally with three-dimensional rocking mechanism made of sprung flat steel coated black with a textured matte finish (RAL 9011) or color-matched with the frame with a textured matte finish (additional charge).

Twin-wheel swivel casters with load-dependent braking, made of black polyamide compliant with DIN EN12529 as the standard version for carpets; with gray soft polyurethane tread for hard flooring.

Seat and backrest

Unitary, ergonomically molded seat shell with armrests made of Biocomposite (70% recycled polypropylene, 30% wood fibers from waste wood). Extra seat cushioning with CFC-free PUR foam. Backrest also comes with extra cut foam upholstery. Fully upholstered, inside with a cover made of 15-mm-thick, breathable and moisture-wicking polyester (50% of which is made from recycled fibers).

Please note

To ensure quality is maintained, we don't offer white leather (74/72). All other standard leather colors are possible.

Yonda. Environmental product information.

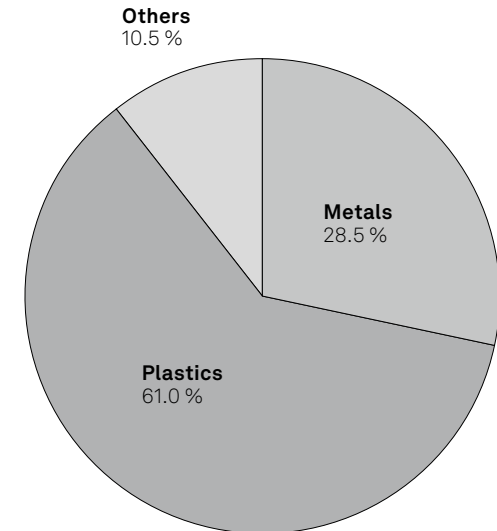


Materials.

Material composition for Yonda model 320/11

Four-leg frame, with a textured matte finish, coated in cream white, shell in cream white, multipurpose glides, seat cushioning covered in re-wool.

	[kg]	[%]
Metals	1.90	28.5
Steel	1.90	28.5
Aluminum	0.00	0.0
Plastics	4.06	61.0
Polypropylene (PP)	3.40	51.1
Polyamide (PA)	0.12	1.8
Polyurethane (PUR)	0.54	8.1
Others	0.70	10.5
Wood (composite wood, veneer)	0.36	5.4
Cover (wool, leather)	0.34	5.1
Total weight	6.66	100.0
Recycling proportion	2.93	44.0
Recycling capability	6.12	92.0



Not recyclable: Powder varnish

Materials are subject to stringent checks. As part of an ABC analysis, the materials are checked to ensure they are environmentally friendly and not harmful to health. Prohibited chemicals are not used in the product at all. All feedstock is listed in a register of hazardous substances. This helps to minimize the use or allow the substitution of any potentially harmful materials.

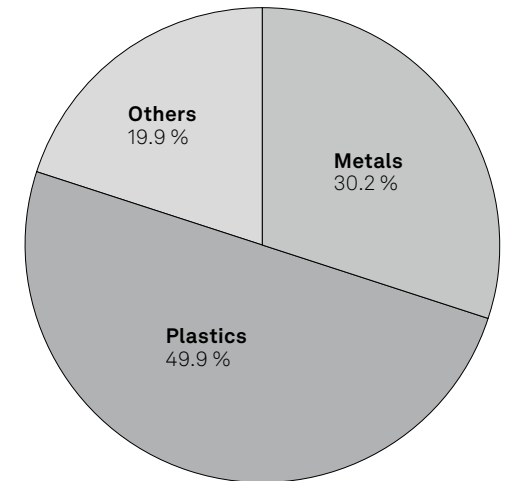
Yonda. Environmental product information.



Materials.

Material composition for Yonda model 320/20
Four-leg frame, FSC®-compliant solid oak,
shell in gray-beige, multipurpose glides

	[kg]	[%]
Metals	2.06	30.2
Steel	2.06	30.2
Aluminum	0.00	0.0
Plastics	3.40	49.9
Polypropylene (PP)	3.40	49.8
Polyamide (PA)	0.00	0.1
Polyurethane (PUR)	0.00	0.0
Others	1.36	19.9
Wood (composite wood, veneer)	1.36	19.9
Cover (wool, leather)	0.00	0.0
Total weight	6.83	100.0
Recycling proportion	4.33	63.4
Recycling capability	6.83	100.0



Materials are subject to stringent checks. As part of an ABC analysis, the materials are checked to ensure they are environmentally friendly and not harmful to health. Prohibited chemicals are not used in the product at all. All feedstock is listed in a register of hazardous substances. This helps to minimize the use or allow the substitution of any potentially harmful materials.

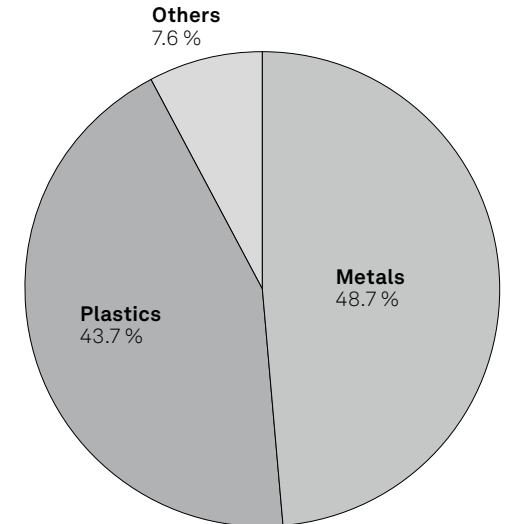
Yonda. Environmental product information.



Materials.

Material composition for Yonda model 320/01
Five-star base frame with a textured matte finish coated in emerald green,
Shell in emerald green, seat cushioning with re-wool
twin-wheel swivel casters with load-dependent braking

	[kg]	[%]
Metals	4.67	48.7
Steel	2.77	28.9
Aluminum	1.90	19.8
Plastics	4.19	43.7
Polypropylene (PP)	3.40	35.5
Polyamide (PA)	0.25	2.6
Polyurethane (PUR)	0.54	5.6
Others	0.70	7.6
Wood (composite wood, veneer)	0.36	4.0
Cover (wool, leather)	0.34	3.6
Total weight	9.57	100.0
Recycling proportion	6.54	68.3
Recycling capability	9.03	94.3




Not recyclable: Powder varnish

Materials are subject to stringent checks. As part of an ABC analysis, the materials are checked to ensure they are environmentally friendly and not harmful to health. Prohibited chemicals are not used in the product at all. All feedstock is listed in a register of hazardous substances. This helps to minimize the use or allow the substitution of any potentially harmful materials.

Wilkhahn and sustainability.



In over 100 years of its corporate history, Wilkhahn can look back on a sustainability philosophy that has grown over decades. Aspects such as durability, social fairness, environmental responsibility and cultural orientation have been evolving as corporate principles since the 1950s. Today, Wilkhahn is regarded internationally as an exemplary company, not only on account of its products but also because of its modern corporate philosophy. This is because the company realized early on that sustainable design should embrace environmental aspects, improve social relationships and define the cultural role of a company. This business approach creates a bond between us and our customers throughout the world. There is surely no more rewarding task than working together for a successful future that is worth living in.

 [Current Sustainability Report with Environmental Statement](#)



For further information please contact us!

Wilkhahn



Wilkening + Hahne GmbH+Co.KG

Fritz-Hahne-Str. 8
31848 Bad Münder
Germany
Tel.: +49 5042 999 100
contact@wilkhahn.de
www.wilkhahn.com



Roof of one of the four pavilions on the Wilkhahn site, which were designed by architect Frei Otto.
Photo: Klemens Ortmeyer