



Occo.

## Occo. Product family.



### Occo

When furnishing contemporary workspaces, the ultimate challenge is to ensure that each area's design varies, but that one single theme prevails throughout. Designers Markus Jehs and Jürgen Laub pulled off a stroke of genius by creating Occo with its distinctively shaped seat shells and striking cut-out sections in the backrests. These not only give the chair an airy, light appearance and outstanding comfort, but lend the range its distinctive look. Complemented by perfectly coordinating bar stools, conference and lounge chairs, plus tables, Occo is the common denominator wherever people come together.

Design: jehs+laub

## Occo. Product family.



### Occo multipurpose chairs / bar stools

Six base frames and four types of upholstery check virtually all the boxes.



### Occo Conference

The chairs stand apart for their spacious fully upholstered seat shells. Active rocking technology turns Occo Conference into a dynamic conference chair. And with height adjustment, it also becomes a fully fledged office chair.



### Occo tables

In terms of form and function, the table range matches the Occo chair models perfectly. It's also a good choice for cafeterias to customer service and meeting spaces all the way to club rooms.



### Occo Lounge

The Occo Lounge models with their low seating height look impressive in lobbies, or in front of fireplaces, or at home in the lounge

Upholstered chair 224/53 at a Graph table 300/40.

When used in meetings, the models with four-star bases and active rocking technology ensure dynamic comfort. Casters also make them even more flexible options.



Multipurpose chairs 221/100, 221/101 and 221/102 at Graph tables 300/25 and 300/30.

The Occo SC (Side Chair) comes without armrests and in a slightly slimmer design. Nevertheless, it's still an unmistakable member of the family. The shell with its characteristic cut-out section offer superior comfort. The chair also enables a range of postures and its compact size uses space efficiently.



Bar stool 223/20, multipurpose chair 222/10 with a felt pad, multipurpose chair 222/11 and Insit bench 782/5 at an Insit table 780/2. The bar stools stand apart for the organic form of the seat shells, which convey a feeling of assurance and comfort. Due to its distinctive style and fluid lines, Occo is easy to combine with other items of furniture, such as the Insit seating unit.



Upholstered chair 224/53 at a Graph table 300/50.

The table and chairs' base frames match each other perfectly. The optional return springs automatically put the seat shells back in their original positions. As a result, the room looks neat and orderly once people have got up and left.



Counter chair 221/51 and bar stool 223/10.

Counter chairs enable interaction at the same height with people standing at receptions and in project spaces/offices at high tables.



Task chair, height-adjustable 221/00 with a felt pad.

The springy backrest and the height-adjustable base frame with its stylish star base make Occo a smart chair for home offices.



Upholstered chair 224/103 at a Versa table configuration. Lounge chair 225/103 with a lounge table 222/72.  
In terms of design and function, the high-quality, diverse chair ranges complement the Occo family superbly. Seamless solutions for a wide range of settings are the upshot.



The 222/81 model with table top and base frame in solid oak and 222/22 armchairs with padding on the inside and oak base frame match each other and have a resimercial appeal.



Multipurpose chair 222/40 with a felt pad.

With non-slip felt pads to hand, upgrading comfort of models without upholstery is child's play. It's easy to remove and clean them, making them a top choice for areas like cafeterias that get dirty quickly.



Barstool 223/20 and high-table 222/61.

The bar stools have been designed to match. They come with a sled (skid) base or four legs made of solid wood, each available in two heights.



Swivel-mounted lounge chair 225/54 with an Occo Lounge table 222/72.  
Highly scalable design options to coordinate with the interior design lend rooms very different atmospheres.



## Occo. Models. Multipurpose chairs / bar stools.



**221/10**  
Multipurpose chair,  
up to 10 are stackable



**221/100**  
Multipurpose chair,  
up to 6 are stackable



**221/20**  
Multipurpose chair



**221/30**  
Visitor chair



**221/40**  
Task chair



**221/00**  
Task chair, height-adjustable



**221/50**  
Counter chair



**222/10**  
Multipurpose chair,  
up to 10 are stackable



**222/100**  
Multipurpose chair



**222/20**  
Multipurpose chair



**222/30**  
Visitor chair



**222/40**  
Task chair



**222/00**  
Task chair,  
height-adjustable



**222/50**  
Counter chair

## Occo. Models. Multipurpose chairs / bar stools.



**223/10**  
Bar stool,  
up to 8 are stackable



**223/20**  
Bar stool

## Occo. Models. Tables.



**222/61**  
Table, square,  
90×90 cm, H 74 cm



**222/61**  
High table, square,  
90×90 cm, H 106 cm



**222/71**  
Table, round,  
Ø 100 cm, H 74 cm



**222/71**  
High table, round,  
Ø 100 cm, H 106 cm



**222/81**  
Table, rectangular,  
80/90×160/180/190 cm, H 74 cm



**222/81**  
High table, rectangular,  
80/90×160/180/190 cm,  
H 106 cm



**222/91**  
Table, oval  
90×180 cm, H 74 cm



**222/91**  
Table, oval  
90×180 cm, H 106 cm



**222/62**  
Table, square,  
75×75 cm, H 45 cm



**222/72**  
Table, round,  
Ø 90 cm, H 45 cm



**222/73**  
Table, round,  
Ø 50 cm, H 50 cm

## Occo. Models. Conference / Lounge.



**224/23**  
Upholstered chair,  
standard height backrest



**224/34**  
Upholstered chair,  
medium height backrest



**224/43**  
Upholstered chair,  
standard height backrest



**224/54**  
Upholstered chair,  
medium height backrest



**224/63**  
Upholstered chair,  
standard height backrest



**224/104**  
Upholstered chair,  
medium height backrest



**225/23**  
Lounge chair,  
standard height backrest



**225/53**  
Lounge chair,  
standard height backrest



**225/54**  
Lounge chair,  
medium height backrest



**225/104**  
Lounge chair,  
medium height backrest

## Occo. Seat shell versions.



**221, 222**

Not upholstered

Felt pad

Seat cushioning

Padding on the inside



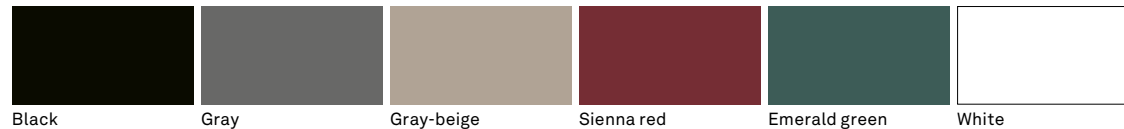
**223**

Not upholstered

Felt pad

Seat cushioning

### Seat and backrest shells



Black

Gray

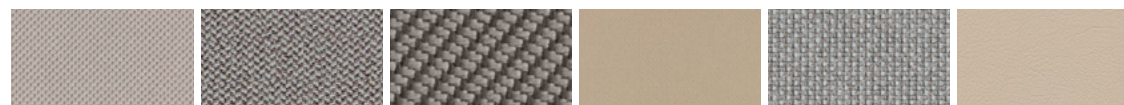
Gray-beige

Sienna red

Emerald green

White

### Upholstery materials



37 Atlantic

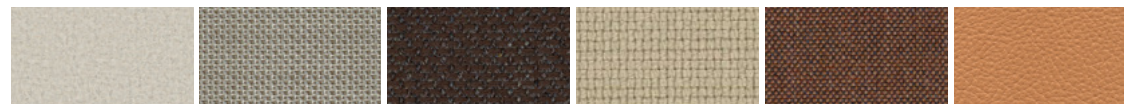
38 Era

51 Oceanic

54 Step/Step Melange

56 Cyber

58 Evida



60 Blazer

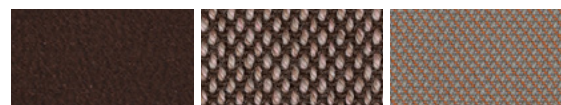
64 Morph

65 Re-wool

66 Lano

68 Remix

74 Leather



87 Leather

91 Steelcut Trio /  
Quartet

92 Credo

# Occo. Designs.



221, 222

Four-leg frame

Solid wood  
base frame\*

Sled base

Four-leg  
frame, swivel-  
mounted

Five-star  
base, swivel-  
mounted

## Frame versions



Black

Gray

Gray-beige

Sienna red

Emerald green

White



\* Oak, with a natural  
oiled finish

\* Oak, white, oiled

\* Oak, stained black

\* Walnut with a  
natural oiled finish

\* Oak, stained gray

Bright chrome-plated



221, 222

Five-star base,  
height-adjustable

Counter stool base frame,  
height-adjustable

## Frame versions



Black

White

Matte polished

Bright chrome-plated

Black plastic

## Frame versions



Black

Gray

Gray-beige

Sienna red

Emerald green

White



223

Sled base

Solid wood  
base frame\*



\* Oak, with a natural  
oiled finish

\* Oak, white, oiled

\* Oak, stained black

\* Walnut with a  
natural oiled finish

\* Oak, stained gray

Bright chrome-plated

\*\* Brushed stainless  
steel

The digital sample colors differ from the originals. You can find our current fabric collection in our media center.

## Occo. Designs.



**224, 225\*\***  
Fully upholstered,  
standard height  
backrest



Fully upholstered,  
medium-height backrest



**224, 225**  
Solid wood base  
frame\*



Sled base



Four-star base,  
swivel-mounted



Five-star base frame  
on casters



Four-star base,  
swivel-mounted

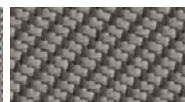


Five-star base,  
swivel-mounted

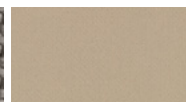
### Upholstery materials



38 Era



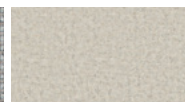
51 Oceanic



54 Step/Step Melange



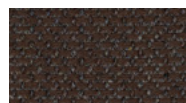
56 Cyber



60 Blazer



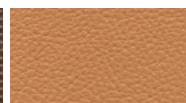
64 Morph



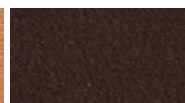
65 Re-wool



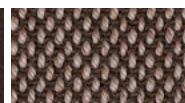
68 Remix



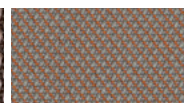
74 Leather



87 Leather



91 Steelcut Trio /  
Quartet



92 Credo

### Frame versions



Black



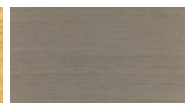
White



Matte polished



\*Oak, with a natural  
oiled finish



\*Oak, white, oiled



\*Oak, stained black



\*Walnut with a  
natural oiled finish



\*Oak, stained gray



Bright chrome-plated

\*\* Optional with exceptionally soft, looserfit upholstery which is achieved by using more material and less tautness in the covers.

## Occo tables. Designs.



222/61-91

### Frame versions



Oak, with a natural oiled finish

Oak, white, oiled

Oak, stained black

Walnut with a natural oiled finish

Oak, stained gray

### Table top groups



Bonded (prelaminated) surfacel, black or white

HPL, through-dyed in white or black (soft matte)



Veneer variant 1 or 2

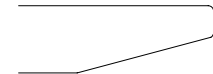
Solid oak

see the price list or catalog for further surfaces

### Edging



Solid wood edging, rounded on the bottom



Chamfered wood edging



Straight plastic edging



Chamfered HPL solid-core edging



222/62, 72

### Frame versions



Black

White

Matte polished

Bright chrome-plated



222/73

### Frame versions



Black

White

Occo. Reference projects. Object: Sparkasse, Bielefeld, Germany, photo: deterringdesign GmbH, models 222/31 and 222/21.



## Occo. Reference projects. Object: Scout 24, Munich, Germany, photo: Niclas Pütz, model 222/20 with felt pads 222.



## Occo. Reference projects.

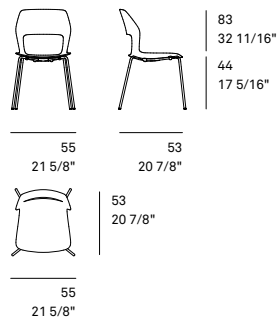
Object: Laubscher, Biel, Germany, photo: Anna-Tina Eberhard, model 221/10 with Timetable Smart 612/00 (design: Andreas Störiko).



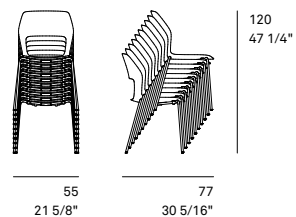
Occo. Reference projects. Object: Hotel ÜberFluss, Bremen, Germany, photo: Michael J. Rüttger, model 222/11 at Timetable tables 610/00 (design: Andreas Störiko).



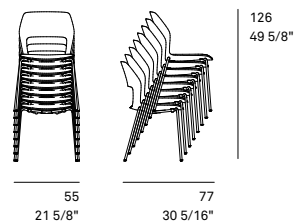
## Occo SC. Models and dimensions.



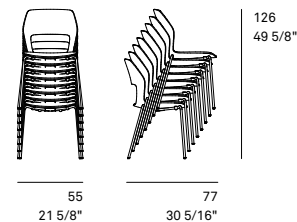
**221/10, 221/11, 221/12**  
Multipurpose chair, stackable



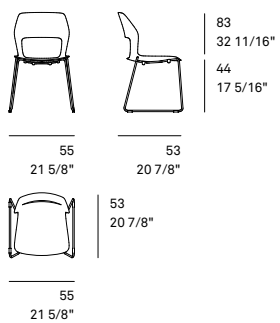
**221/10**  
Not upholstered



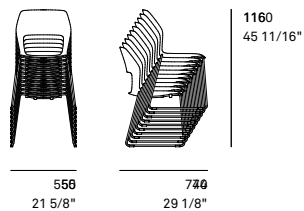
**221/11**  
Seat cushioning



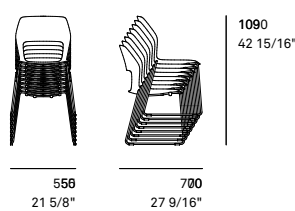
**221/12**  
Padding on the inside



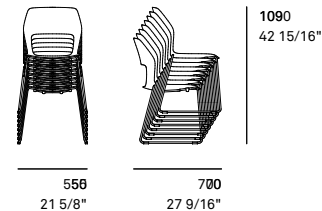
**221/100, 221/101, 221/102**  
Multipurpose chair



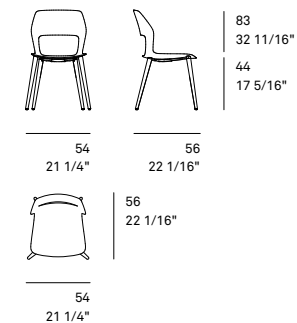
**221/100**  
Not upholstered



**221/101**  
Seat cushioning

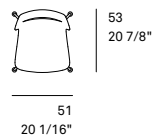
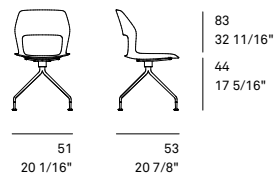


**221/102**  
Padding on the inside

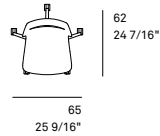
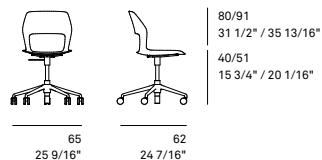


**221/20, 221/21, 221/22**  
Multipurpose chair

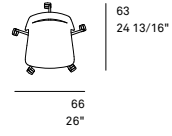
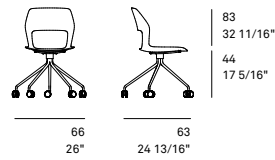
## Occo / Occo SC. Models and dimensions.



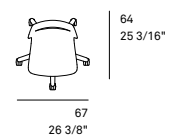
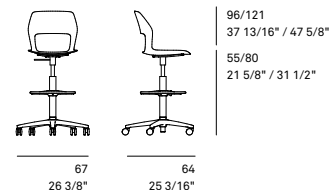
**221/30, 221/31, 221/32**  
Visitor chair



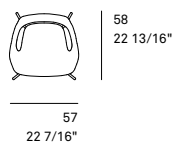
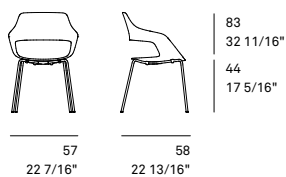
**221/00, 221/01, 221/02**  
Task chair,  
height-adjustable



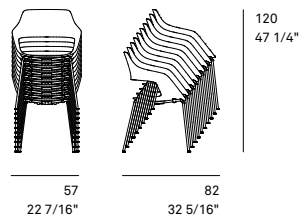
**222/40, 222/41, 222/42**  
Task chair



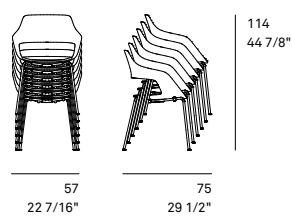
**221/50, 221/51, 221/52**  
Counter chair,  
height-adjustable



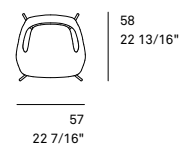
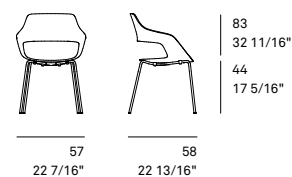
**222/10, 222/11**  
Multipurpose chair, stackable



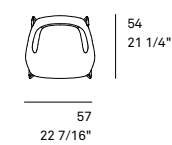
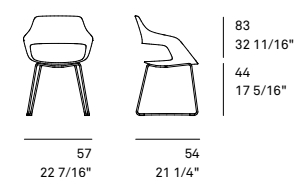
**222/10**  
Not upholstered



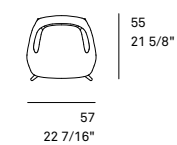
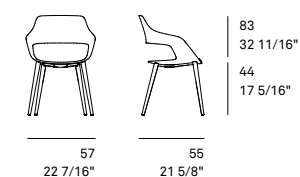
**222/11**  
Seat cushioning



**222/12**  
Multipurpose chair

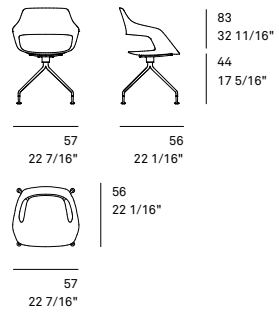


**222/100, 222/101, 222/102**  
Multipurpose chair

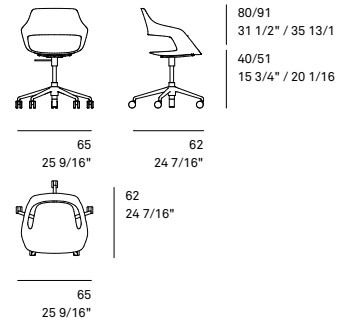


**222/20, 222/21, 222/22**  
Multipurpose chair

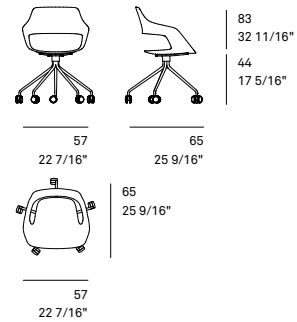
## Occo SC. Models and dimensions.



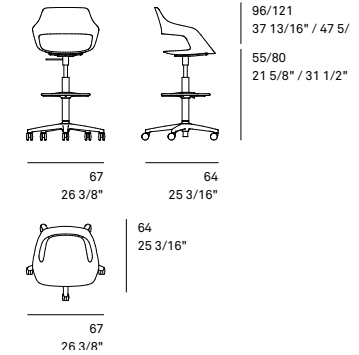
**222/30, 222/31, 222/32**  
Visitor chair



**222/00, 222/01, 222/02**  
Task chair, height-adjustable

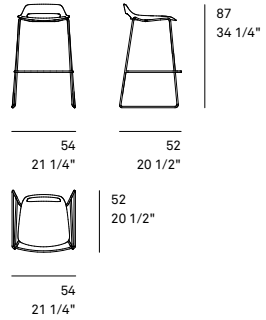


**222/40, 222/41, 222/42**  
Task chair

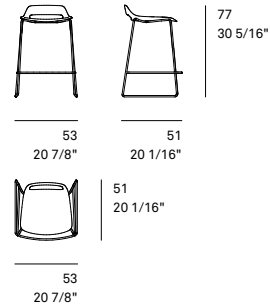
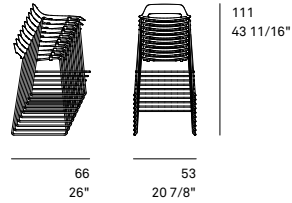


**222/50, 222/51, 222/52**  
Counter chair,  
height-adjustable

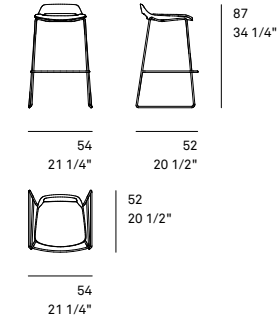
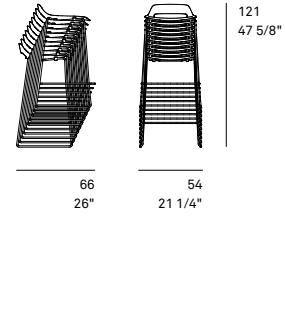
## Occo Bar stool. Models and dimensions.



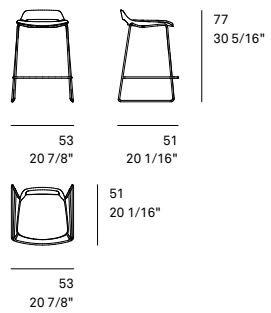
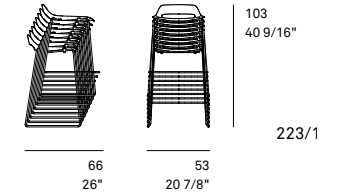
**223/10**  
Bar stool



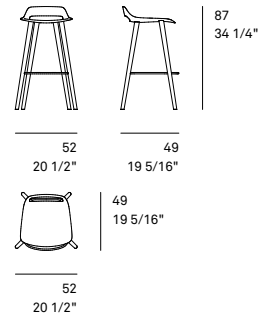
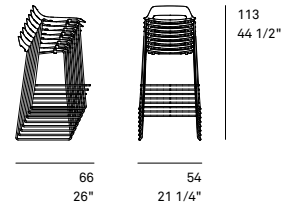
**223/10**  
Bar stool



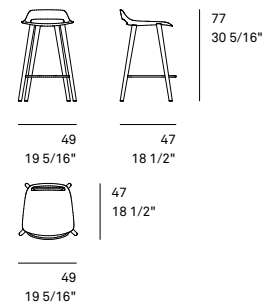
**223/11**  
Bar stool



**223/11**  
Bar stool

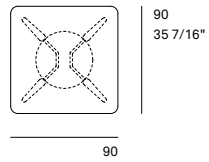
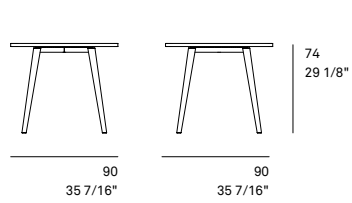


**223/20, 223/21**  
Bar stool

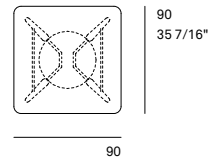
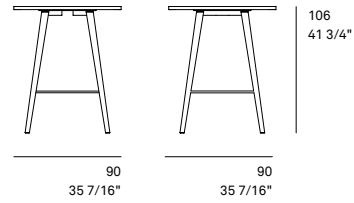


**223/20, 223/21**  
Bar stool

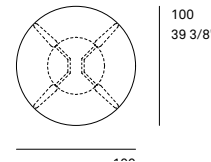
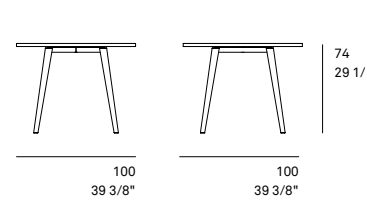
## Occo table. Models and dimensions.



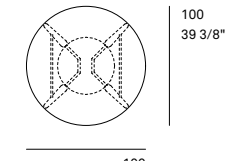
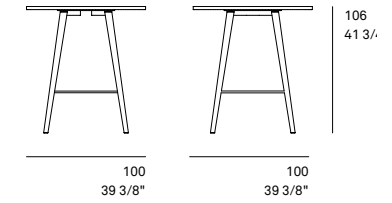
**222/61**  
Square



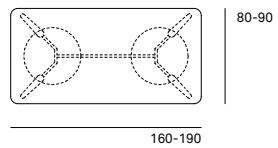
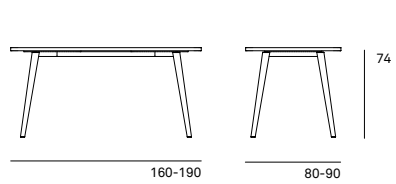
**222/61**  
Square



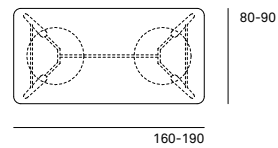
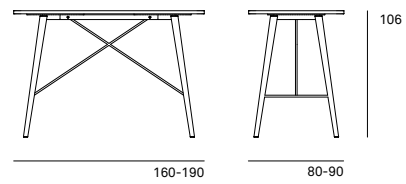
**222/71**  
Round



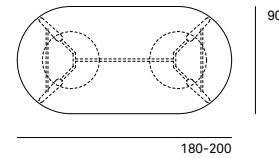
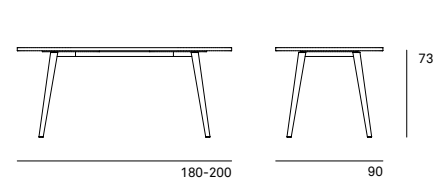
**222/71**  
Round



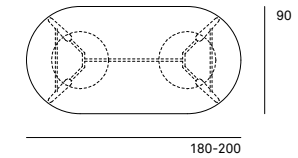
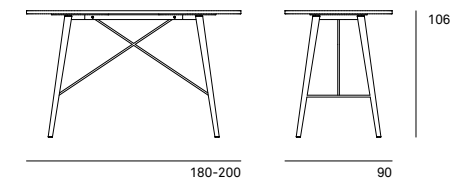
**222/81**  
Rectangular



**222/81**  
Rectangular

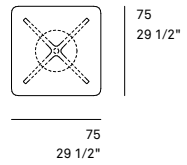
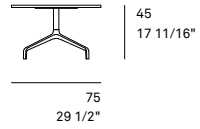


**222/91**  
Oval

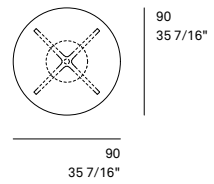
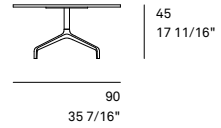


**222/91**  
Oval

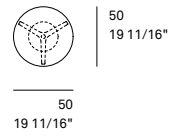
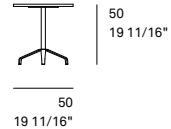
## Occo table. Models and dimensions.



**222/62**  
Square

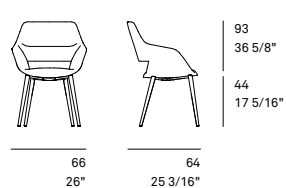


**222/72**  
Round

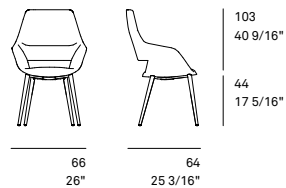


**222/73**  
Round

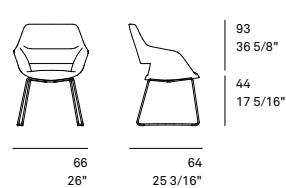
## Occo Conference. Models and dimensions.



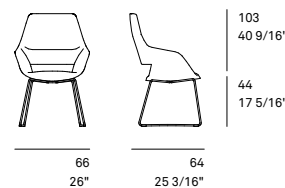
**224/23**  
Upholstered chair



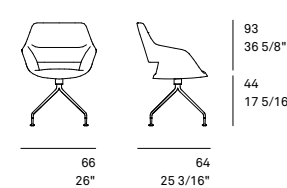
**224/24**  
Upholstered chair



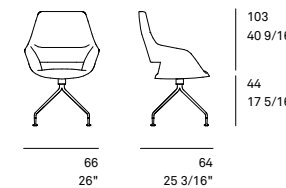
**224/103**  
Upholstered chair



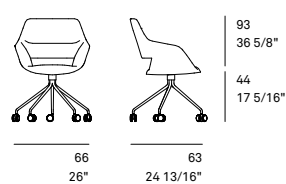
**224/104**  
Upholstered chair



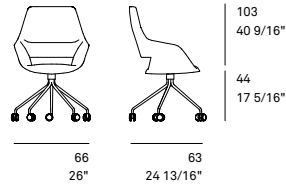
**224/33**  
Upholstered chair



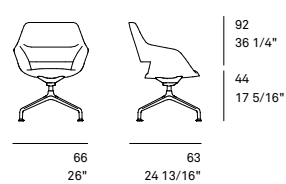
**224/34**  
Upholstered chair



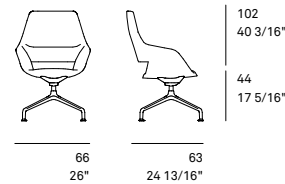
**224/43**  
Upholstered chair



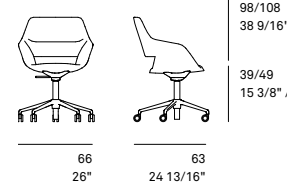
**224/44**  
Upholstered chair



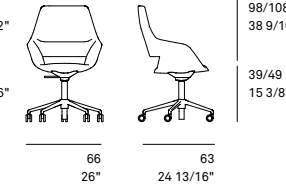
**224/53**  
Upholstered chair



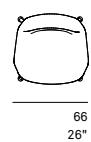
**224/54**  
Upholstered chair



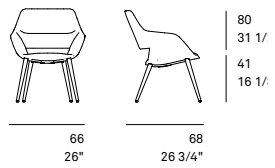
**224/63**  
Upholstered chair,  
height-adjustable



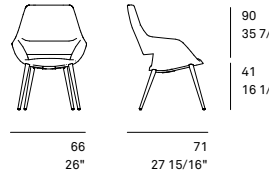
**224/64**  
Upholstered chair,  
height-adjustable



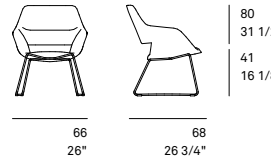
## Occo Lounge. Models and dimensions.



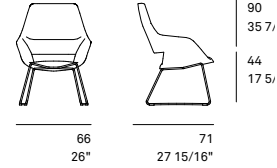
**225/23**  
Lounge chair



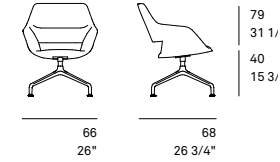
**225/24**  
Lounge chair



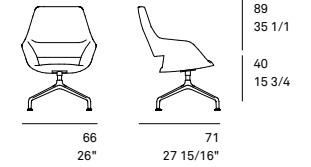
**225/103**  
Lounge chair



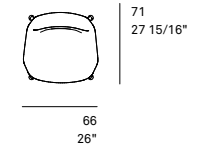
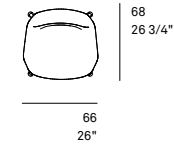
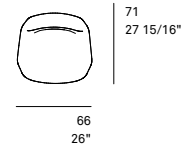
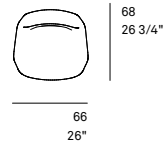
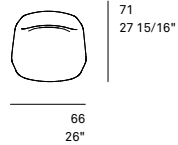
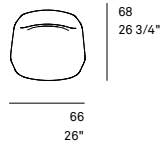
**225/104**  
Lounge chair



**225/53**  
Lounge chair



**225/54**  
Lounge chair



## Occo, Occo SC, Occo bar stool. Technical details.

Occo offers superior comfort, enormous versatility and a vast range of design options in a distinctive design language. It's ideal for conference rooms, open-plan meeting areas, cafés, co-working spaces or in homes.

### Frame

#### Four-leg frame models 221/10, 221/11, 221/12, 222/10, 222/11, 222/12

Tubular steel frame, stackable (except for model 222/12), with a textured matte finish coated white, black, gray, gray-beige, emerald green, sienna red or bright chrome-plated. Up to 10 versions without upholstery can be stacked, and 8 with padding on the seat and on the inside.

Please note: The leather-cover version is not stackable. Stacking versions with coated frames can cause color to rub off, which is not covered by our guarantee. We recommend chrome-plated frames for this purpose. Models 221/10 and 222/10 (shell without upholstery) with four separators made of PUR and frame cover made of plastic (PP), each in dark gray. Remove the optional felt pad before stacking because permanent pressure marks can otherwise occur. Models 221/11, 221/12, 222/11 and 222/12 with stacking guard made of plastic (PP) in dark gray. Tubular steel frame, stackable (except for model 222/12), with a textured matte finish coated white, black, gray, gray-beige, emerald green, sienna red or bright chrome-plated. Up to 10 versions without upholstery can be stacked, and 8 with padding on the seat and on the inside.

Please note: The leather-cover version is not stackable. Stacking versions with coated frames can cause color to rub off, which is not covered by our guarantee. We recommend chrome-plated frames for this purpose.

#### Solid wood four-leg frame models 221/20, 221/21, 221/22, 222/20, 222/21, 222/22

Legs in FSC®-certified solid oak (with a natural oiled finish) or based on the Wilkhahn wood color-stain samples, optionally in solid walnut (with a natural oiled finish). Seat bearer made of tubular steel in dark gray with a textured matte finish to fit to the seat shell and attach the four legs.

#### Sled (skid) base, models 221/100, 221/101, 221/102 und 222/100, 222/101, 222/102

Sled (skid) base made of steel rod, 12 mm in diameter, coated with a textured matte finish in white, black, gray, gray-beige, emerald green or sienna red or bright chrome plated. Coated frames as a standard and, if required bright chrome-plated frames optionally come with multipurpose glides made of black polyamide. Models 221/100, 221/101 and 221/102 optionally with inline connectors made of black through-dyed polyamide including multipurpose glides, optionally with extra felt inserts for flooring that easily scratches (e.g. stone, parquet).

#### Four-star base models 221/30, 221/31, 221/32, 222/30, 222/31, 222/32

Butted tubular steel frame, coated with a textured matte finish in white, black, gray, gray-beige, emerald green, sienna red, or with bright chrome plating with a seat bearer made of die-cast aluminum in dark gray with a textured matte finish to fit to the shell. In the case of four-star base frames, the steel glides are in dark gray with a textured matte finish.

Four-leg and four-star base models are fitted with multipurpose glides for soft and hard floorings. For sensitive flooring, please order with extra felt glides (at no additional charge).

Five-star base models 221/40, 221/41, 221/42, 222/40, 222/41, 222/42 with twin-wheel swivel casters, load-dependent braking, made of black polypropylene compliant with DIN EN 12529 as the standard version for carpets, optionally with gray tread made of polyurethane for hard flooring.

#### Five-star base models 221/00, 221/01, 221/02, 222/00, 222/01, 222/02

Five-star base made of die-cast aluminum with a textured matte finish, coated in white or black, matte polished or with bright chrome plating, with swivel-mounted gas lift column and a black lever that allows the height to be precision adjusted, seat bearer made of die-cast aluminum in dark gray, optionally with active rocking technology,

can be locked in a horizontal neutral 0 position, with a die-cast aluminum housing, matte polished or high-luster polished. Compliant with DIN EN 1335 and ANSI/BIFMAX5.1 with twin-wheel swivel casters with load-dependent braking made of black polyamide compliant with DIN EN 12529, as the standard version for carpets; with gray polyurethane tyre for hard flooring.

#### Counter stool base frame models 221/50, 221/51, 221/52, 222/50, 222/51, 222/52

Five-star base made of black through-dyed, fiberglass-reinforced polyamide, optionally of die-cast aluminum, coated, polished or high-luster polished, with multipurpose twin-wheel swivel casters with load-dependent braking. Swivel-mounted, black gas lift, precision-adjustable with a black lever, with a height-adjustable, bright chrome-plated foot ring and lock screw to keep it in place. Seat bearer made of die-cast aluminum in dark gray.

#### Sled (skid) base bar stools, models 223/10, 223/11

Sled (skid) base, stackable when not upholstered, with steel rod footrest, 12 mm diameter, with a textured matte finish coated in white, black, gray, gray-beige, emerald green, sienna red or bright chrome-plated. Please note: Stacking versions with coated frames can cause color to rub off, which is not covered by our guarantee. We recommend chrome-plated frames for this purpose.

## Occo, Occo SC, Occo bar stool. Technical details.

### Sled (skid) base bar stools, models 223/10, 223/11

Sled (skid) base, stackable when not upholstered, with steel rod footrest, 12 mm diameter, with a textured matte finish coated in white, black, gray, gray-beige, emerald green, sienna red or bright chrome-plated. Please note: Stacking versions with coated frames can cause color to rub off, which is not covered by our guarantee. We recommend chrome-plated frames for this purpose.

### Bar stools, four-leg frame in solid wood, models 223/20, 223/21

Seat bearer made of tubular steel in dark gray with a textured matte finish to fit to the seat shell and accommodate the four legs made of solid oak (natural oiled finish), or based on the Wilkhahn wood color-stainsamples, optionally made of solid walnut (with a natural oiled finish). With steel rod footrest, bright chrome-plated.

### Seat and backrest

Unitary, ergonomically molded seat shell with cut-out section, made of reinforced through-dyed polypropylene optionally in white, black, gray, gray-beige, emerald green or sienna red. Models without upholstery optionally with a felt seat cushion with non-slip coating. In a light mottled hue, anthracite, graphite, mango, verde, deep water.

All upholstery in models with seat upholstery or padding on the inside is made of cut foam.

### Accessories

#### Four-wheeled trolley for four-leg frames made of tubular steel

Four-wheeled trolley for up to 10 four-leg frames made of tubular steel.

#### Four-wheeled trolley for sled-base chairs

Four-wheeled trolley for up to 10 sled-base chairs.

### Standards

The Occo multipurpose chairs with four-leg frames comply with the DIN EN 16139-L1 office-chair standard.

Meets the DIN EN 16139 office-chair standard, can be stacked:

222/10 four-leg frame, without upholstery up to 10 stackable,

222/11 four-leg frame, with seat cushioning, up to 6 stackable,

222/12 four-leg frame, with padding on the inside, up to 4 stackable.

### Please note

To ensure quality is maintained, we don't offer white leather (74/72). All other standard leather colors are possible. When exposed to ultra violet rays for long periods of time, the colors of plastics can change slightly. Due to the nature of the material, there are slight differences in the color between white table tops with bonded surfaces and HPL table tops and the white Occo plastic chairs. Felt is a natural product. Therefore, there can be differences in the color. These differences are not a justified reason for complaint but underscore the material's uniqueness.

All chairs are fitted with multipurpose glides for soft and hard floorings, in the case of sensitive floorings please order with extra felt glides (at no additional charge).

Five-star base frames are fitted with casters for soft floorings. Please order with soft casters (at no additional charge) for hard flooring (e.g. stone, parquet)



www.tuv.com  
ID 1111212561

## Occo Conference, Occo Lounge. Technical details.

A versatile chair range in a high-quality design, with six types of frame, two backrest heights, two types of upholstery and a wide range of covers, configurable for all sorts of different areas ranging from lounges where people work, areas in the middle of rooms, workspaces, meeting spaces and conference rooms, as well as cafeterias, restaurants and dining rooms, or also lobbies, cozy spaces with fireplaces or TV areas. Excellent ergonomics and superb comfort due to upholstered areas with different levels of firmness. Fully upholstered seat body with integrated armrest pads and a distinctive cut-out section between the seat and the backrest to marry a lightweight appearance with the comforting appeal of a shell chair. With replaceable covers, whose stitching and clamps trace the three-dimensional contours and zones of the upholstered component precisely and in a form-fit way.

### Frame

#### **Solid wood four-leg frame, models 224/23, 224/24, 225/23, 225/24**

Legs in FSC®-certified solid oak (with a natural oiled finish) or based on the Wilkhahn wood color-stain samples, optionally in solid walnut (with a natural oiled finish). Seat bearer made of tubular steel in dark gray with a textured matte finish to fit to the seat shell and attach the four legs. In the 225 range lounge models, the seat shell can be tilted backward by 8°.

#### **Sled (skid) base models 224/103, 224/104, 225/103, 225/104**

Sled (skid) base made of steel rod, 12 mm diameter, with a textured matte finish, coated in black and white, or with bright chrome plating. Coated frames as a standard and, if required, bright chrome-plated frames optionally with multipurpose glides made of black polyamide, optionally with additional felt insert. The 225/103 and 225/104 lounge models can be tilted backward by 8°.

#### **Four-star base frame, models 224/33, 224/34**

Butted tubular steel frame, with a textured matte finish, coated in white or black or with bright chrome plating, with steel glides in dark gray with a textured matte finish, with multipurpose glides for soft and hard flooring, for sensitive flooring, please order with extra felt glides (at no additional charge).

#### **Five-star base frame, models 224/43, 224/44**

Butted tubular steel frame, with a textured matte finish, coated in white or black or with bright chrome plating with twin-wheel swivel casters with load-dependent braking, made of black polyamide, compliant with DIN EN 12529 as the standard version for carpets, optionally available with gray polyurethane tire for hard flooring.

#### **Four-star base, models 224/53, 224/54, 225/53, 225/54**

Four-star base made of die-cast aluminum with a textured matte finish, coated white or black, matte polished or with bright chrome plating, with a swivel-mounted stainless steel column (optionally with swivel-return mechanism), in the 225 range lounge models, the seat shell can be tilted 8° backward. Models 224 with active rocking technology, a lever locks it in a horizontal 0 position, with die-cast aluminum, matte-polished body. Black, multipurpose glides made of plastic for all types of flooring. Optionally with base glides with a larger contact area for sensitive floorings, either to match the star base with a textured matte finish, coated white or black, matte chrome-plated (matte-polished star base) or bright chrome plated (with a bright chrome-plated star base). Black polyamide glides for carpets. For hard floors (e.g. stone), please order with soft TPU, for wooden floors (e. g. parquet) with additional felt. These glides change the models' sitting height from 224 to 44 cm. Models 224 optionally, compliant with DIN EN1335 and ANSI/BIFMA X5.1, with twin-wheel swivel casters with load-dependent braking made of black polyamide compliant with DIN EN 12529, as the standard version for carpets, with gray polyurethane tire for hard flooring. The casters change the seating height to 45 cm.

## Occo Conference, Occo Lounge. Technical details.

### **Five-star base, models 224/63, 224/64**

Five-star base made of die-cast aluminum with a textured matte finish, coated in white or black, matte polished or with bright chrome plating, with swivel-mounted gas lift column and active rocking technology, a lever allows the height to be precision adjusted and locked in a horizontal neutral 0 position, with a die-cast aluminum housing, matte polished. Compliant with DIN EN 1335 and ANSI/BIFMAX5.1 with twin-wheel swivel casters with load-dependent braking made of black polyamide compliant with DIN EN 12529, as the standard version for carpets; with gray polyurethane tyre for hard flooring.

### **Seat and backrest**

Unitary seat shell with integrated armrests and backrest shell, each made of molded plywood, fully padded and covered with PUR molded foam, in different levels of firmness depending on the are upholstered. Seat and backrest shell joined with concealed screws. Covers with contour-creating stitching in the seat and backrest, fixed to the upholstery with clamps, replaceable. Optional seat or seat and backrest with exceptionally soft, looser-fit upholstery (not available in fabric 54, 68 and 91) which is achieved by using more material and less tautness in the covers.

### **Please note**

For quality management reasons, we don't offer white leather (74/72). All other standard leather colors are possible. Looser-fit upholstery is exceptionally soft and comfortable upholstery that yields to a greater extent when a load is placed on it. This effect is achieved by applying more material and less tension in the fabric and leather covers. The nature of this high-quality upholstery method means that it creases more easily. Therefore, we do not accept this feature as a justified reason for complaint.

## Occo table. Technical details.

### Frame

#### Models 222/61, 222/71, 222/81, 222/91

With four-leg frame in FSC®-certified solid oak (natural oiled) or based on the Wilkhahn wood color-stain samples, optionally in solid walnut (with a natural oiled finish).

#### Models 222/61 and 222/71

In standing height with a horizontal stretcher made of bright chrome-plated round steel. With multipurpose glides for soft and hard floorings. In the case of wooden floorings (e.g. parquet) please order with extra felt glides (at no additional charge).

#### Models 222/81 and 222/91

In standing height with a center underframe and diagonal stretcher made of bright chrome-plated round steel.

#### Models 222/62 and 222/72

Side-table height with a four-star base made of die-cast aluminum with a textured matte finish, coated in white or black, matte-polished or with bright chrome plating, with a table column complete with textured matte finish in black or coated white when the star base is white. Black, multipurpose glides made of plastic for all types of flooring.

### Model 222/73

In side-table height with a three-star base made of flat steel and table column made of tubular steel, coated white or black with a textured matte finish, with round steel flange, coated black. Multipurpose glides made of black polypropylene

#### Table top group 2 – veneer

- Table top thickness 26 mm
- Core material MDF (medium density fiberboard)

#### Models 222/61 | 222/71 | 222/81 | 222/91

##### Variant 1

- Natural oak veneer, white glazed, graphite stained or ash veneer stained black based on the Wilkhahn wood color-stain samples
- With straight wood edging, color-matched as far as possible with the veneer

##### Variant 2

- Walnut, smoked oak or black walnut veneer with sapwood based on the Wilkhahn wood color-stain samples
- With straight wood edging, color-matched as far as possible with the veneer

### Models 222/62 | 222/72 | 222/73

#### Variant 1

- Oak, knotty oak or heartwood ash veneer from the Wilkhahn wood color-stain samples
- With straight wood edging, color-matched as far as possible with the veneer

#### Variant 2

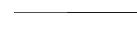
- Walnut, or black walnut veneer with sapwood based on the Wilkhahn wood color-stain samples
- With straight wood edging, color-matched as far as possible with the veneer



E2 – 5 Chamfered wood edging, 12 mm radius

#### Table top group 5 – with bonded surface

- Table top thickness 25 mm
- Particle board with a bonded surface with melamine resin in white or black
- Edging color-matched with the table top



E2 – 3 Straight plastic edging

#### Panel group 7 – HPL through-dyed

- Panel thickness 12 mm

- Table top made of through-dyed HPL (high pressure laminate) in white or with not very reflective soft touch surface with antifingerprint characteristics in soft matte black
- Edging color-matched with the table top



E5 – 1 solid-core HPL, chamfered edging, 4 mm radius

#### Table top group 10 – solid wood

- Table top thickness 25 mm
- Table top made of solid oak (with a natural oiled finish) based on the Wilkhahn wood color-stain samples



E4 – 1 Solid wood edging, rounded on the bottom

#### Information

Due to the nature of the material, there are slight differences in the color between white table tops with bonded surfaces and HPL table tops and the white Occo plastic chairs.

## Occo. Environmental product information.

### Certificates product/standards



Green Tick  
Product  
Certification



Blue Tick  
Product  
Certification

DIN EN 1335 ANSI/BIFMA X5.1

Not all certificates / standards apply to all types.

### Company's certificates, memberships



Mitglied der  
**DGNB**  
Deutsche Gesellschaft für Nachhaltiges Bauen  
German Sustainable Building Council



## Wilkhahn and sustainability.



In over 100 years of its corporate history, Wilkhahn can look back on a sustainability philosophy that has grown over decades. Aspects such as durability, social fairness, environmental responsibility and cultural orientation have been evolving as corporate principles since the 1950s. Wilkhahn today is regarded internationally as a model of excellence, not only on account of its products but also because of its modern corporate philosophy. This is because the company realized early on that sustainable design should embrace environmental aspects, improve social relationships and define the cultural role of a company. This approach to the way we do business creates a bond between us and our customers throughout the world. There is surely no more rewarding task than working together for a successful future that is worth living in.

[Download current sustainability report with environmental statement](#)



For further information please contact us!

# Wilkhahn

## Wilkening + Hahne GmbH+Co.KG

Fritz-Hahne-Str. 8  
31848 Bad Münder  
Germany  
Tel.: +49 5042 999 100  
contact@wilkhahn.de  
www.wilkhahn.com



Roof of one of the four pavilions,  
which were designed by architect  
Frei Otto, on the Wilkhahn site.

Photo: Klemens Ortmeyer