

Metrik.



Metrik

Metrik fuses a contemporary aesthetic with superior comfort. Its sculptural shape with dynamic lines, gentle curves and precise edges lend it a distinctive, timeless appeal. Innovative manufacturing technology makes the complex seat body seamless. The seat and tubular frame are in one color and emphasize the integrated design.

This generously proportioned chair with integrated seat cushioning offers ergonomic comfort, which backrest cushioning can enhance even further. Metrik's distinctive design and choice of colors allow it to blend in harmoniously with all sorts of backdrops. And with a chrome-plated frame, you can even stack it.

Available in an array of colors, Metrik is ideal for diverse settings. It is also combinable with other table and office chair ranges in offices, waiting spaces or modern homes.



The sophisticated production process enables different material thicknesses, shapes and elasticity, which form modern polygonal surfaces and lines from the outside, but which are ergonomically shaped on the inside. As a result, Metrik is a real eye-catcher that stands apart for its outstanding comfort.



Metrik. Overview of models.



186/3
Multipurpose chair

Metrik. Overview of models.



186
Four-wheeled trolley for 8 cantilever chairs



187
Inline connectors
2 for the bright chrome-plated frame

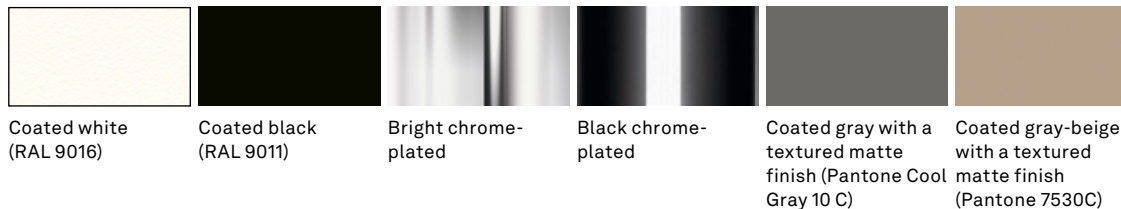
Not pictured:

185
Fold up writing tablet

Metrik. Designs.



Frame

Coated white
(RAL 9016)Coated black
(RAL 9011)

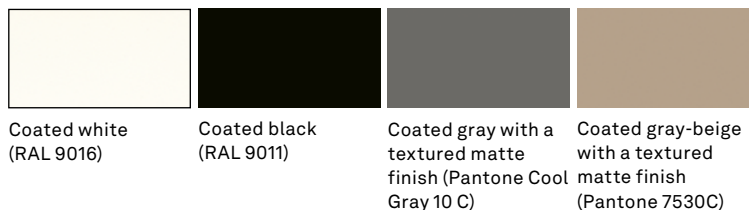
Bright chrome-plated

Black chrome-plated

Coated gray with a textured matte finish (Pantone Cool Gray 10 C)

Coated gray-beige with a textured matte finish (Pantone 7530C)

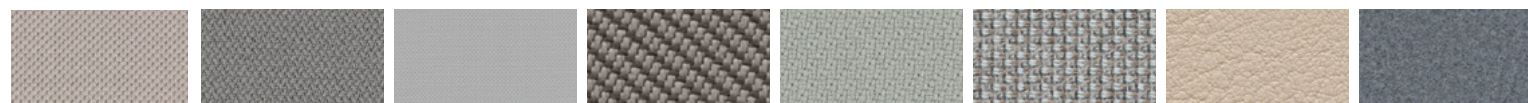
Seat and backrest shell

Coated white
(RAL 9016)Coated black
(RAL 9011)

Coated gray with a textured matte finish (Pantone Cool Gray 10 C)

Coated gray-beige with a textured matte finish (Pantone 7530C)

Seat and backrest cushioning



Atlantic

Era

Nova

Oceanic

Step/Step Melange

Cyber

Evida

Blazer



Morph

Re-wool

Lano

Remix


Steelcut Trio/
Quartet

Credo

Leather

Inline connector made of black plastic.
Four-wheeled trolley always coated black.
Writing tablet made of black, through-dyed HPL.

The digital sample colors differ from the originals.

 You can find all upholstery material and more colors in our material library.

Metrik. Reference projects. Model 186/3, building: NRPI Rockcastle, Bucharest, Romania, photo: Tryingtodoart SRL



Metrik. Reference projects. Model 186/3, building: Sociedad Espanola de Cardiologia, Madrid, Spain, photo: Allona Arquitectos



Metrik. Reference projects. Model 186/3, building: Zeitgeist Hotel, Vienna, Austria, photo: Stephan Huger | studiohuger.at



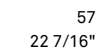
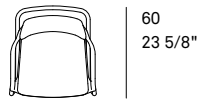
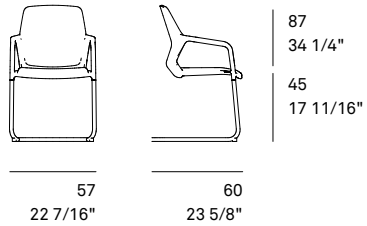
Metrik. Reference projects. Model 186/3, building: Die Sandburg Hotel, Langeoog, Germany, photo: Leuchtende Hotelfotografie, Thomas Haberland



Metrik. Models and dimensions.

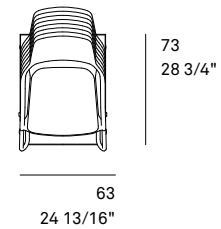
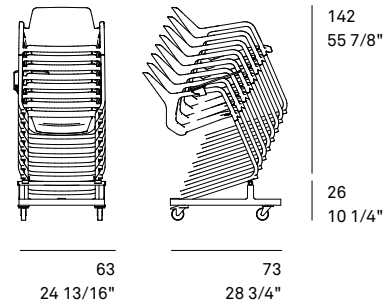
186/3

Cantilever chairs



186

Four-wheeled trolley



Metrik. Technical details.

The Metrik cantilever chair stands apart for its consistently integrated design approach. The way the components are integrated plays with contrasts such as distinctiveness and neutrality, comfort and an understated appeal, as well as modernity and timeless design. As a result, Metrik can be combined with a variety of table concepts and office chairs. Six colors for the body and frame, combined with a wide variety of covers and colors, offer highly scalable design options. To suit preferences, Metrik either complements the overall design concept or purposely adds a splash of color.

Frame

Tubular steel frame optionally in a textured matte finish, coated in white, black, gray, gray-beige, bright chrome-plated or black chrome-plated, with black polyamide anti-tilt stopper as the standard version for carpets, optionally with multipurpose glides for hard flooring (e.g. stone), please order with extra felt glides for wooden flooring (e.g. parquet). Stacking buffer made of plastic to match the shells and colour of the frame.

Please note

Stacking versions with coated frames can cause colour to rub off, which is not covered by our guarantee. The same applies when inline connectors are used. We recommend chrome-plated versions for circumstances like these.

Seat and backrest

Unitary seat and backrest shell with integrated armrests made of through-dyed, fiberglass-reinforced polyamide the same as the base frame, optionally with a textured matte finish coated in white, black, gray or gray-beige. Replaceable seat cushioning, consisting of seat upholstery panel and covered polyurethane one-piece molded foam. Type with optional, replaceable backrest cushioning the same as the seat cushioning. The seat cushioning comes with optional soft padding (additional charge).

Weight 8.6 kg

Accessories

Inline connectors (2 in each set) made of black plastic.

Standards

The Metrik cantilever chairs comply with DIN EN16139-L1 and ANSI/BIFMA X5.1 standards.

In compliance with the DIN EN16139-L1 office-chair standard, up to 4 chairs can be stacked vertically.



Information

When exposed to ultra violet rays for long periods of time, the colors of plastics can change slightly.

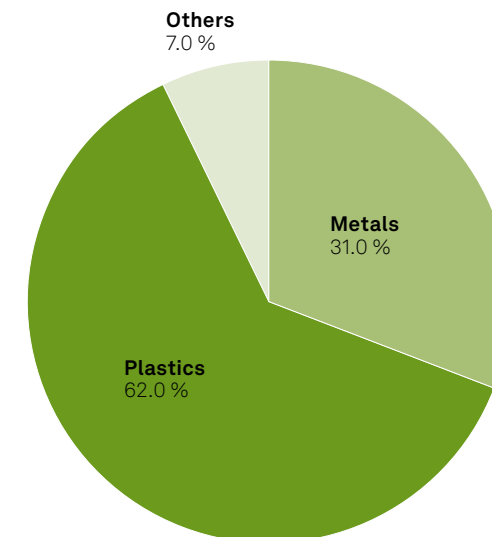
Metrik. Material Composition.

Model Metrik 186/3

	kg	%
Metals	3,20	31,0
Steel	3,20	31,0
Aluminum	0,00	0,0
Plastics	6,20	62,0
Polypropylene (PP)	1,30	13,0
Polyamide (PA)	4,30	42,0
Polyurethane (PUR)	0,70	6,0
Others	0,70	7,0
Upholstery material (e.g. wool)	0,70	7,0
Total weight	10,10	100,0
Recycling proportion	1,60	16,0
Recycling capability	9,40	93,0

Not recyclable: Upholstery material, Teflon glides

Materials are subject to stringent checks. As part of an ABC analysis, the materials are checked to ensure they are environmentally friendly and not harmful to health. Prohibited chemicals are not used in the product at all. All feedstock is listed in a register of hazardous substances. This helps to minimize the use or substitution of any potentially harmful materials.



Metrik. Certificates/awards.

Awards



Product certificates/product standards



DIN EN 16139-L1 ANSI / BIFMA X 5.1

Company's certificates, memberships



Wilkhahn and sustainability.



In over 100 years of its corporate history, Wilkhahn can look back on a sustainability philosophy that has grown over decades. Aspects such as durability, social fairness, environmental responsibility and cultural orientation have been evolving as corporate principles since the 1950s. Today, Wilkhahn is regarded internationally as an exemplary company, not only on account of its products but also because of its modern corporate philosophy. This is because the company realized early on that sustainable design should embrace environmental aspects, improve social relationships and define the cultural role of a company. This business approach creates a bond between us and our customers throughout the world. There is surely no more rewarding task than working together for a successful future that is worth living in.

↓ [Current Sustainability Report with Environmental Statement](#)



For further information please contact us!

Wilkhahn



Wilkening + Hahne GmbH+Co.KG

Fritz-Hahne-Str. 8
31848 Bad Münder
Germany
Tel.: +49 5042 999 100
contact@wilkhahn.de
www.wilkhahn.com



Roof of one of the four pavilions on the Wilkhahn site, which were designed by architect Frei Otto. Photo: Klemens Ortmeier