

Wilkhahn



Graph.



Graph

When it comes to exclusive conference rooms, the Graph conference chair sets new standards. It offers uncompromising quality, exceptional value, and superb comfort.

The chair's name hints at the graphic-like quality of its shape. The seat shell is precision cut and reassembled to look more pared down. The upshot is an appealing mix of a fluid form, clear lines, open and closed sections. The sophisticated, upholstered seat shell and its elastic Y-shaped support ensure excellent comfort.

The Graph Iconic is a particular highlight. This conference chair design takes playing with contrasts to a new level by combining outstanding comfort with a unique look.

The matching tables appear lightweight and stylish. Whether chosen for large conferences, small meetings or executive offices, items of Graph furniture complement each other. Their superlative surfaces, exclusive materials, perfect craftsmanship and outstanding comfort are virtually unparalleled.

Graph-Family.



Graph Conference chairs

Pioneering form. Innovative comfort.
Impressive details.



Graph Iconic

Timeless elegance and top quality.



Graph-Conference table.

Lightweight and exclusive.

Graph furniture in our digital human-centered workplace's conference room looks and feels exceptional. With its elevated comfort and generous leg room, it expresses the regard in which users are held. The oval table shape puts all meeting attendees on an equal footing. Conference chair 302/5 with table 300/00:



Active rocking technology enables flexible sitting positions, meaning additional range of motion. Due to its precision-adjustable height, Graph is an outstanding conference or high-quality executive chair. Conference chair 302/8 with a Versa table 638/51:



Classy covers, stylish armrests, and a base frame made of coated, bright chrome-plated or matte-polished aluminum lend the Graph chair an exceptionally top-notch look. 301/5 chair model at a 300/25 table configuration for 16 people:



The versatile formats range from round tables to long and compact oval shapes that stem from squares and rectangles. In sizes of 120 x 120 cm to 780 x 230 cm, the Graph tables have space for four to 22 people.

Graph 300/25 table configuration with 301/5 conference chairs and Asienta 861/5 upholstered chairs, a 862/5 upholstered bench with backrest and 860/2 side table:



Like the chairs, the Graph also looks seamless. Their crisp edges and fluid forms make the Graph tables look very lightweight and exclusive.





In the Iconic Edition, designers Jehs+Laub played with contrasts in the upholstery too. For the iconic edition, upholstery foam, laminated on both sides, is added to part of the seat and backrest cover. Stylish, diamond-shaped top stitching is used to sew the foam to the cover. The extra cushioning from the multiple three-dimensional mini cushions created offers superior comfort. It also lends the chair a unique appearance.

Iconic Edition 304/6.



The top stitching on the leather covers creates contours and continues in the leather armrest pads.



The design's perfect, right down to the last detail. The chair's fluid transition points and sophisticated upholstery offer an outstanding high-quality look and feel and comfort.



Graph is so distinctive for the way that contrasts are played with to form a special piece of furniture. The contrast between straight lines and organic curves, hard and soft materials, industrial-standard perfection and superb craftsmanship is also continued in the top-stitched upholstery.



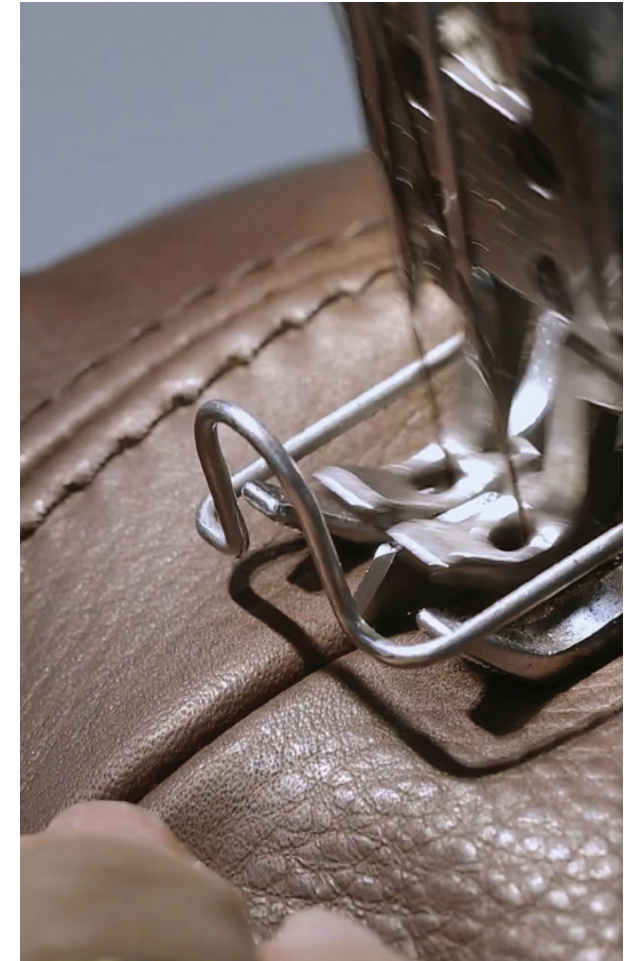
Although the diamond shapes are quite small, they stand out clearly as mini three-dimensional cushions.



The exclusive look and feel of the Graph chairs is due to a combination of flawless design, choice materials and superior craftsmanship.



Graph is made only with exceptionally high-quality textiles and hand-picked, semi-aniline or vegetable-tanned bullhide leathers, from which the multiple parts of the cover requiring sewing are cut.



The stitching has to be meticulously precise so that the transitions between the upholstery and the armrest's contours match perfectly.

Graph fuses a pioneering form with innovative comfort and stand-out details.



Base frame with glides



Base frame with base glides



Base frame with casters



Stylish armrests



Graph models with active mechanics feature stepless height adjustment and a tilt mechanism that can be locked in place.



Elastic connecting elements at the front and a springy brace at the rear mean the seat adapts forward and backward to the body's center of gravity.



Optionally with an embedded, leather-covered armrest pad, only color-matched in combination with leather cover 74 or 87.

Graph. Overview of models.



301/5
Medium-height backrest, Swivel-mounted



302/5
High backrest, Swivel-mounted



301/6
Medium-height backrest, Swivel-mounted



302/6
Medium-height backrest, Swivel-mounted



301/7
Medium-height backrest
Precision-adjustable height



302/7
High backrest
Precision-adjustable height



301/8
Medium-height backrest
Precision-adjustable height
With active rocking mechanism



302/8
High backrest
Precision-adjustable height
With active rocking mechanism

Graph Iconic. Overview of models.



304/5
High backrest, Swivel-mounted



304/6
High backrest, Swivel-mounted

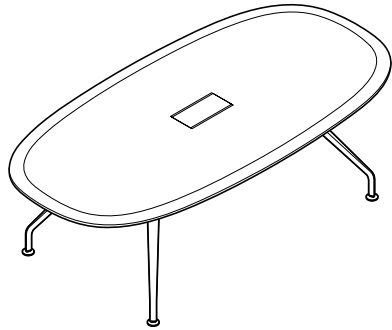


304/7
High backrest
Precision-adjustable height

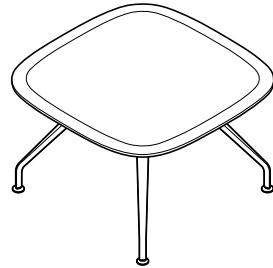


304/8
High backrest
Precision-adjustable height
With active rocking mechanism

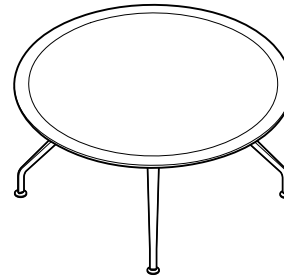
Graph. Tables Overview of models.



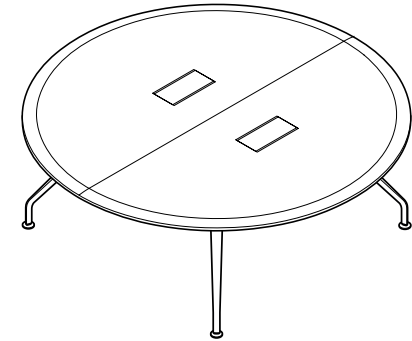
300/00
Oval, H 73 cm
120×200 cm
120×240 cm, for 6 people
130×280 cm, for 8 people



300/30
Square, H 73 cm
120×120 cm, for 4 people
190×190 cm, for 8 people

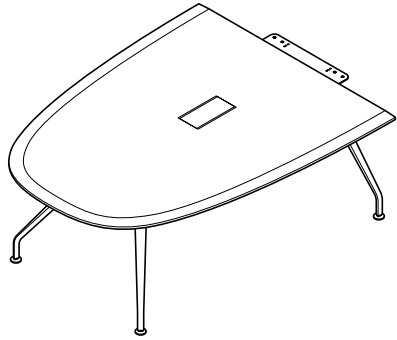


300/30
Round, H 73 cm
Ø125 cm, for 4 people
Ø150 cm, for 4 people

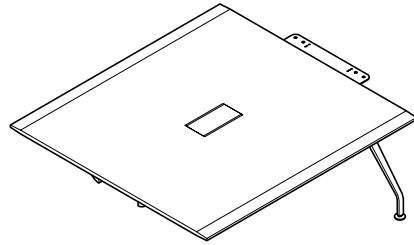


300/40
Round, H 73 cm
Ø210 cm, for 8 people

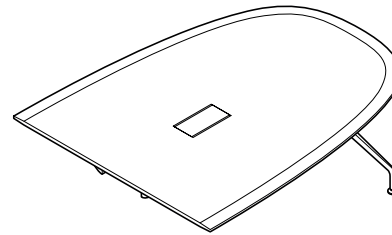
Graph. Table systems. Overview of models.



300/14
Starting element
150×190 cm, H 73 cm
150×270 cm, H 73 cm

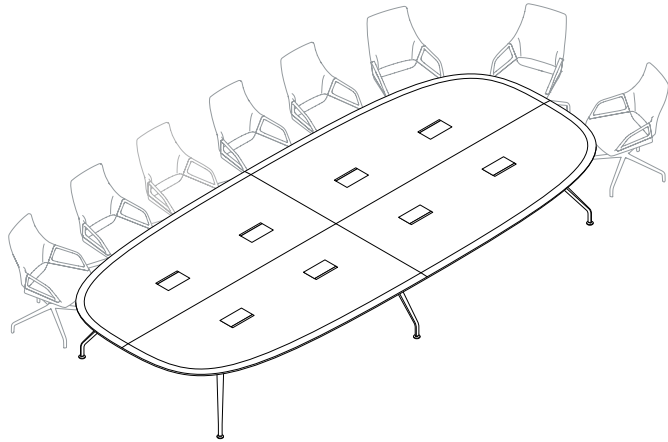


300/16
Middle element
150×160 cm, H 73 cm
150×240 cm, H 73 cm

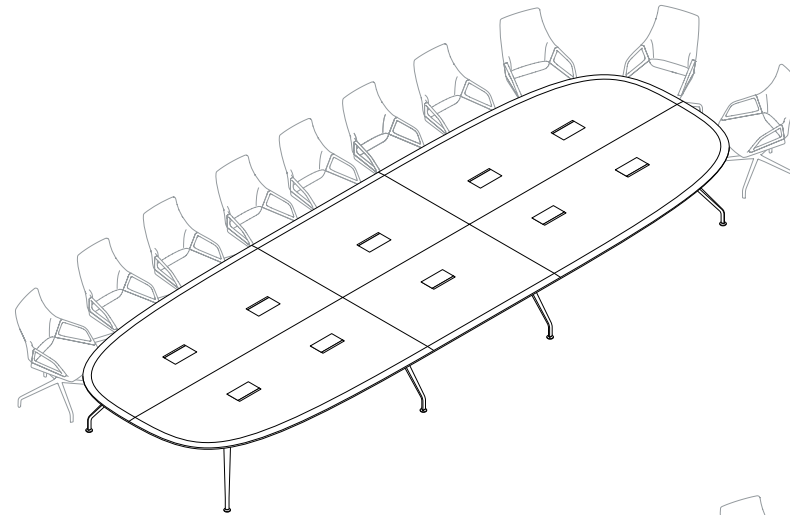


300/15
Finishing element
150×190 cm, H 73 cm
150×270 cm, H 73 cm

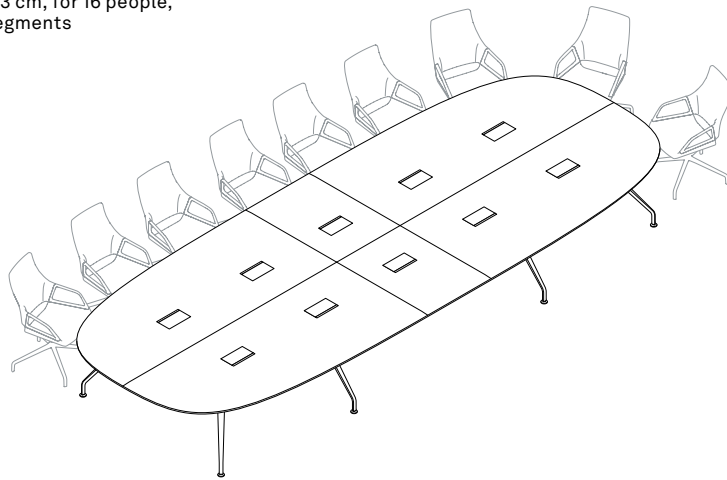
Graph. Table systems. Overview of models.



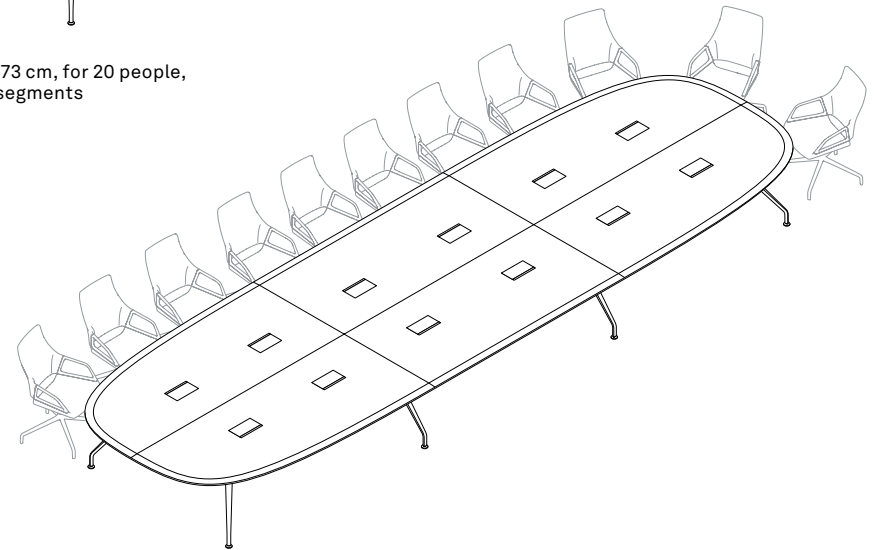
300/25
230 x 540 cm, H 73 cm, for 16 people,
consisting of 4 segments



300/27
230 x 700 cm, H 73 cm, for 20 people,
consisting of 6 segments



300/26
230 x 620 cm, H 73 cm, for 18 people,
consisting of 6 segments



300/28
230 x 780 cm, H 73 cm, for 22 people,
consisting of 6 segments

Graph. Tables. Accessories.



Single table portal, wood, opens lengthways



Basic single table portal



Socket strips with multiple modules



Vertical cable management made of coated sheet steel for the table leg



Cable channel



Base frame with adjustable base glides

Graph. Designs.

301/5, 302/5, 301/6, 302/6, 301/7, 302/7, 301/8, 302/8



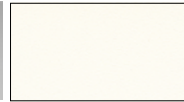
Base frame and armrests



Matte-polished aluminum



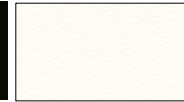
Bright chrome-plated



Coated white (RAL 9016)



Coated black (RAL 9011)



Coated white with a textured matte finish (RAL 9016)



Coated with a black textured matte finish (RAL 9011)

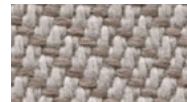


Mocca metallic

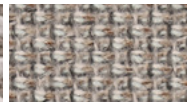


Silk metallic

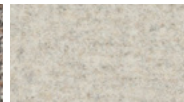
Upholstery materials



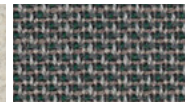
51 Oceanic



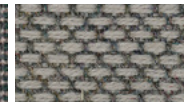
56 Cyber



60 Blazer



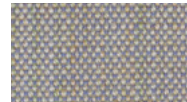
64 Morph



65 Re-wool



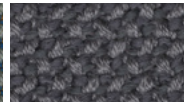
66 Lano



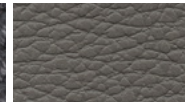
68 Remix



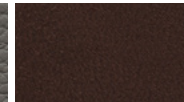
91 Steelcut Trio/Quartet



92 Credo




74 Leather



87 Leather

The digital sample colors differ from the originals.

 You can find all upholstery material and more colors in our material library.

Graph. Designs.

304/5, 304/6, 304/7, 304/8



Base frame and armrests



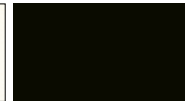
Matte-polished aluminum



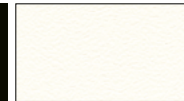
Bright chrome-plated



Coated white (RAL 9016)



Coated black (RAL 9011)



Coated white with a textured matte finish (RAL 9016)



Coated with a black textured matte finish (RAL 9011)

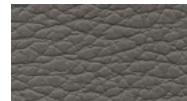


Mocca metallic

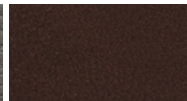


Silk metallic

Upholstery materials




74 Leather



87 Leather

The digital sample colors differ from the originals.

 You can find all upholstery material and more colors in our material library.

Graph. Reference projects. Model 301/5. Building: Chamber of Commerce, Kirchberg, Luxembourg. Photo: Vincent Remy



Graph. Reference projects. Model 301/5. Building: New York Stock Exchange, New York, US. Photo: Eric Laignel



Graph. Reference projects. Model 302/6. Building: Akasaka Intercity Conference Center, Tokyo, Japan. Photo: SS Kikaku Inc.



Graph. Reference projects. Model 301/5. Building: NautaDutilh, Amsterdam, the Netherlands. Photo: Peter Baas

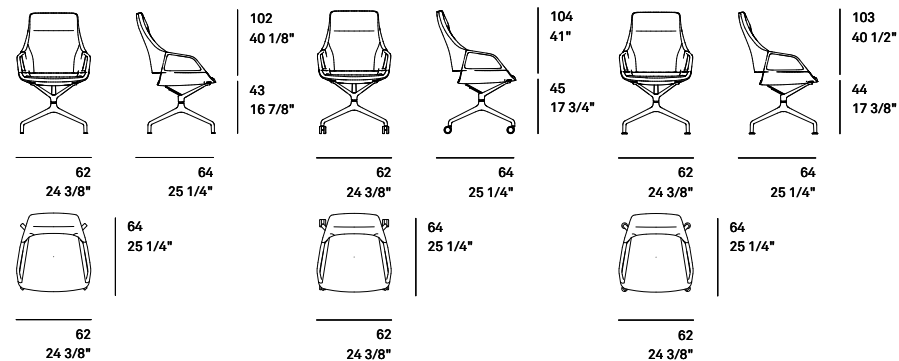


Graph. Reference projects. Models 301/5 at a table configuration with models 301/14, 300/16, 300/15 and customized options for curved models. Building: Sparkasse headquarters, LeerWittmund, Germany. Photo: Werner Huthmacher

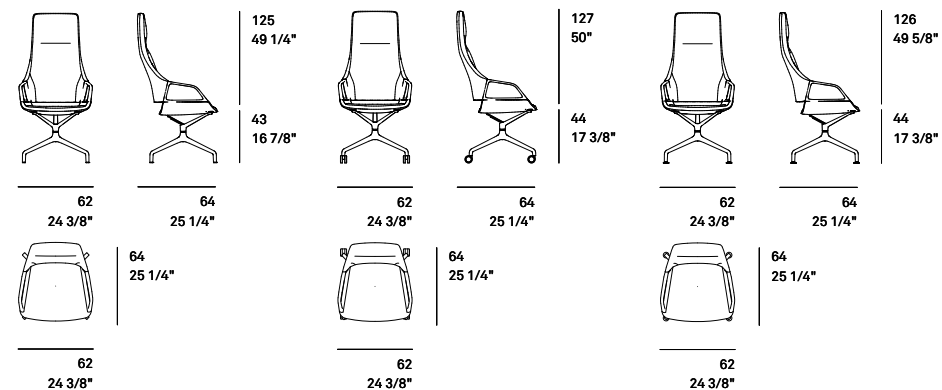


Graph. Models and dimensions.

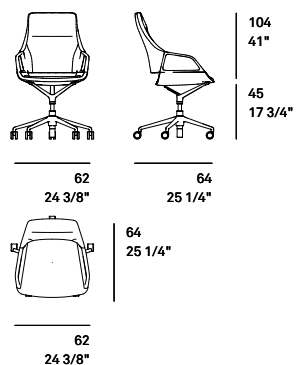
301/5
Medium-height backrest, Swivel-mounted



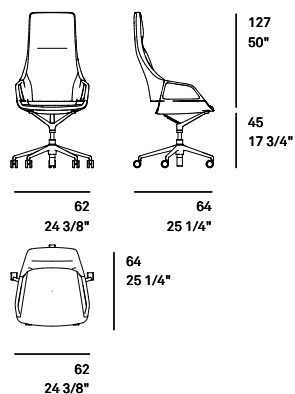
302/5
High backrest, Swivel-mounted



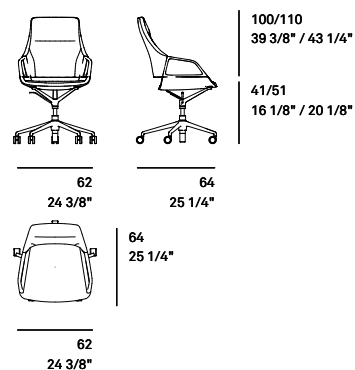
301/6
Medium-height backrest, Swivel-mounted



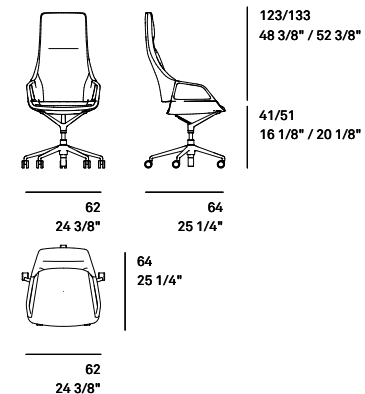
302/6
Medium-height backrest, Swivel-mounted



301/7
Medium-height backrest
Precision-adjustable height

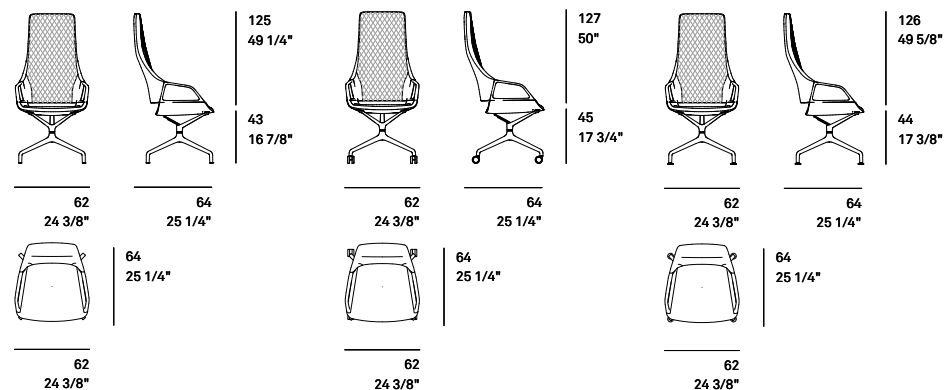


302/7
High backrest
Precision-adjustable height

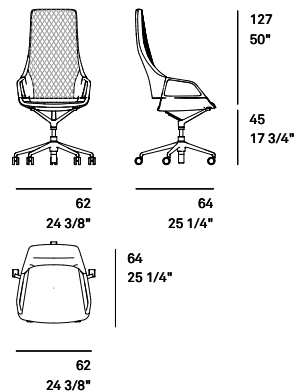


Graph. Models and dimensions.

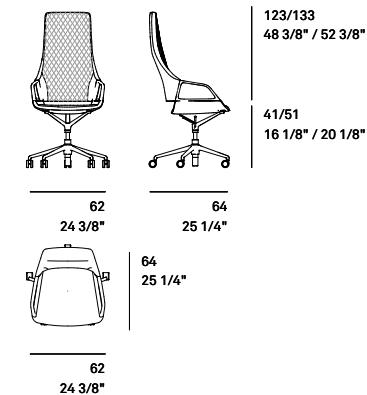
304/5 High backrest, Swivel-mounted



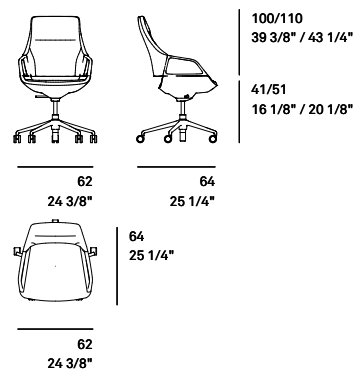
304/6 High backrest, Swivel-mounted



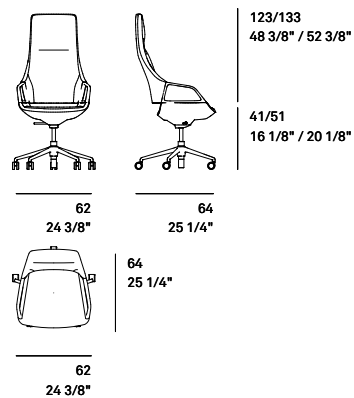
304/7 High backrest Stufenlose Höheneinstellung



301/8 Medium-height backrest Precision-adjustable height With active rocking mechanism

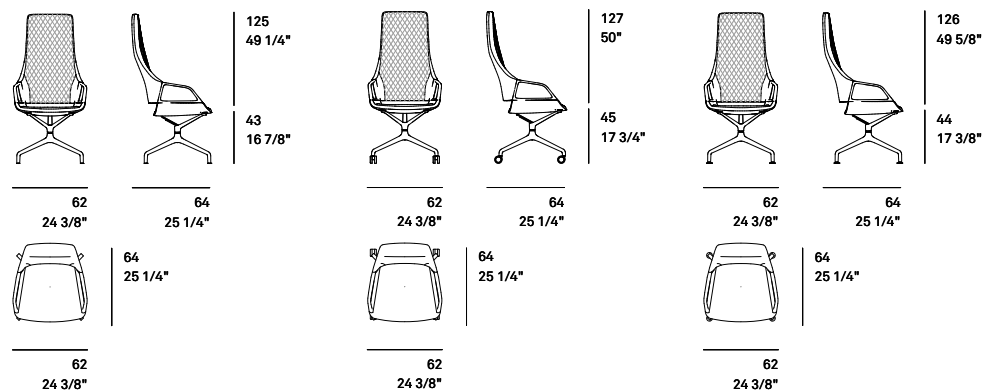


302/8 High backrest Precision-adjustable height With active rocking mechanism

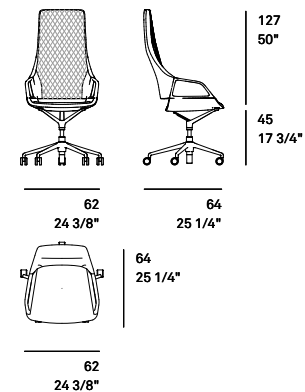


Graph. Models and dimensions.

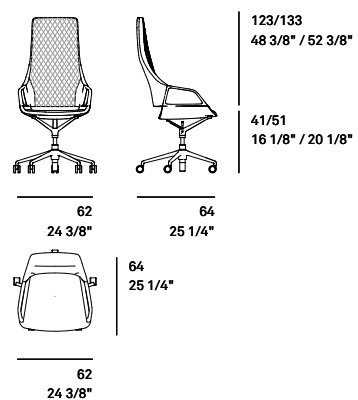
304/5 High backrest, Swivel-mounted



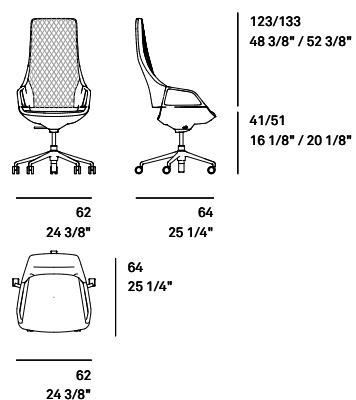
304/6 High backrest, Swivel-mounted



304/7 High backrest Precision-adjustable height

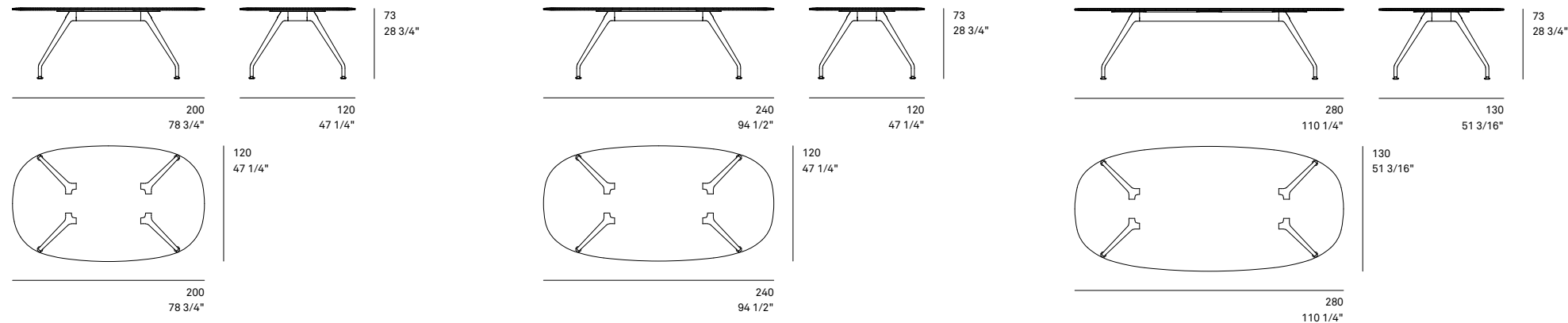


304/8 High backrest Precision-adjustable height With active rocking mechanism

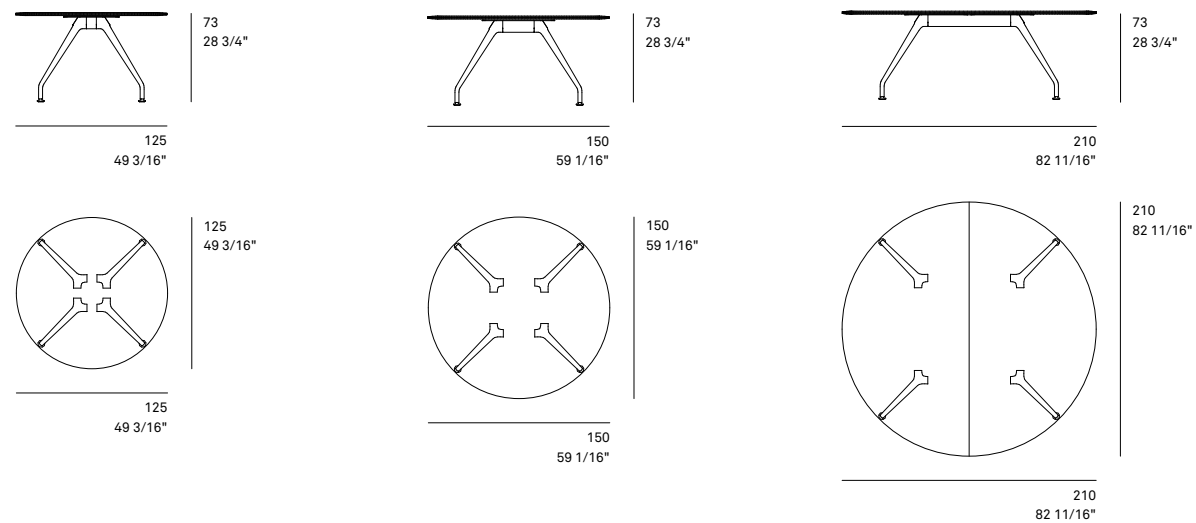


Graph. Models and dimensions.

300/00 Table, oval



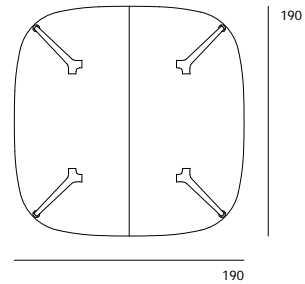
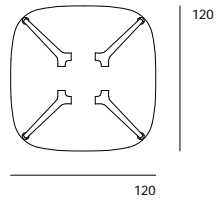
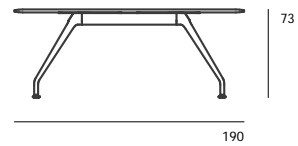
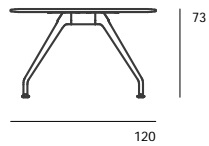
300/30, 300/40, 300/50 Table, round



All dimensions in cm.
Subject to change.

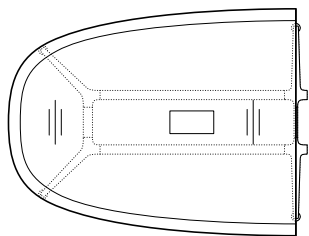
Graph. Models and dimensions.

300/30, 300/40, 300/50 Table, square

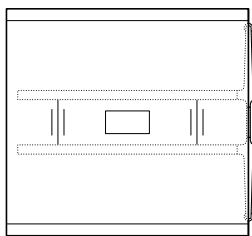


Graph. Models and dimensions.

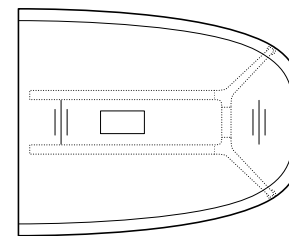
300/14 Starting element 150×190 cm (59"×74¾")



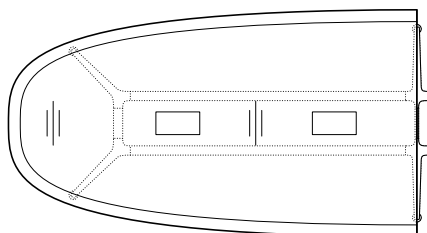
300/16 Middle element 150×160 cm (59"×63")



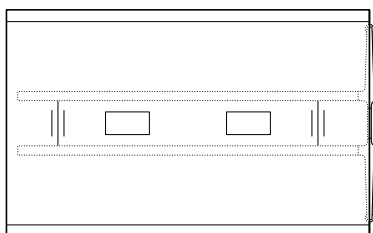
300/15 Finishing element 150×190 cm (59"×74¾")



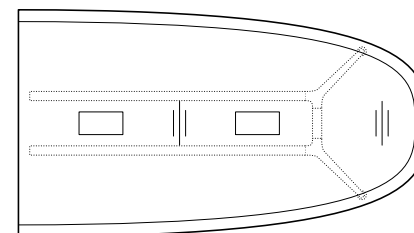
300/14 Starting element 150×270 cm (59"×106¼")



300/16 Middle element 150×240 cm (59"×94½")



300/15 Finishing element 150×270 cm (59"×106¼")



Graph Chairs. Technical details.

Distinctive, high-end, standalone conference chair in two backrest heights. Armrests stylishly link the seat and backrest. Exceptional, sprung (and at the sides also elastic) comfort due to three-point support with rear spring strut and sophisticated upholstery method. Can be used in traditional conference and meeting rooms, executive offices and boardrooms or prestigious dining areas.

Frame

Models 301/5, 302/5 and 304/5: Four-star base made of die-cast aluminum, coated black or signal white, matte polished or bright chrome-plated. Black, multipurpose glides made of plastic for all types of flooring. Optionally with base glides with larger contact area for sensitive floorings, either to match the star base coated black or in signal white, matte chrome-plated (matte-polished star base) or bright chrome plated (bright chrome-plated star base). Black polyamide glides for carpets. For hard floors (e.g. stone), please order with soft TPU, for wooden floors (e.g. parquet) with additional felt. These glides change the seating height to 44 cm. Optionally with casters for four-star bases compliant with the DIN EN1335 and ANSI/BIFMAX5.1 standards for conference chairs. Black polyamide twin-wheel swivel casters with load-dependent braking compliant with the DIN EN12529 standard, with black polyurethane tire for multipurpose use on hard and soft floorings: The casters' black plastic shell comes either with a chrome-plated ring (for a coated star base), matte chrome-plated ring (for a matte polished star base) or a chrome-plated ring (for a bright chrome-plated star base). These casters change the seating height to 45 cm.

Models 301/5, 302/5 and 304/5: Swivel-mounted column with Y-shaped seat bearer made of die-cast aluminum, coated in black or signal white, matte polished or bright chrome-plated to match the star base. Permanently elastic, rubber/metal connecting elements. Sprung elastic strut made of top-quality spring steel in black. Models 301/8, 302/8 and

304/8: Swivel-mounted column with seat bearer and integrated rocking mechanism made of die-cast aluminum and high-luster polished or matte polished.

Models 301/6, 302/6, 304/6, 301/7, 302/7, 304/7, 301/8, 302/8 and 304/8: Die-cast aluminum five-star base coated in black or signal white, matte polished or bright chrome-plated, with casters for five-star bases compliant with the DIN EN1335 and ANSI/BIFMAX5.1 standards for conference chairs. Twin-wheel swivel casters with load-dependent braking made of black polyamide compliant with DIN EN12529, with black polyurethane tire for multipurpose use on hard and soft floors: Black plastic shell for the casters either with chrome-plated ring (coated star base), matte chrome-plated ring (matte polished star base) or chrome-plated ring (bright chrome-plated star base).

All models (except for 301/8, 302/8 and 304/8) with Y-shaped seat bearer made of die-cast aluminum, coated in black or signal white, matte polished or bright chrome-plated to match the star base. Permanently elastic, rubber/metal connecting elements. Sprung elastic strut made of top-quality spring steel in black.

Models 301/6, 302/6 and 304/6 with swivel-mounted columns.

Models 301/7, 302/7, 304/7 and models 301/8, 302/8 and 304/8 with precision-adjustable seating height via a gas lift column.

Seat and backrest

Seat and backrest frame made of metal, with wave springs, fully covered in polyurethane foam with additional cushioning and replaceable textile or leather covers. Covers on the 304/5, 304/6, 304/7, 304/8 (Iconic Edition) models come with diamond-shaped top stitching and cut foam laminated on both sides and incorporated into the covers and are only available in 74/99, 74/16, 87/99, 87/85 leather.

Armrests

Armrests that connect the seat and backrest made of die-cast aluminum and to match the frame coated black or signal white, matte polished or bright chrome plated. Optionally with integrated, leather-covered armrest pads, in black 74/99 leather when the chair has fabric covers, in the same material and color in the case of leather covers.

Standards

The Graph chairs comply with the DIN EN16139-L1 and ANSI/BIFMAX5.1 office-chair standard.



Subject to change.

Graph Tables. Technical details.

A high-quality table system for traditional conference and executive workspaces.

Base frame

Table legs made of bright chrome-plated, die-cast aluminum, matte polished chrome, or coated in black or signal white. Table crossbeams/underframes made of aluminum extruded profile, color-matched with the table legs. Table top bearers to connect to the table top made of black coated steel, exception: Table top bearer is coated white when the frame is coated white. Adjustable table glides (10 mm) are made of steel, the glide cover is made of die-cast zinc, surface the same as the frame, with glide insert made of polyamide for soft floorings and polyurethane for hard floorings or with felt insert.

Core table top panels

- MDF table top (medium density fiberboard)

Table top group 2 – veneer

- Table top thickness 26 mm

Variant 1

- Oak, knotty oak or heartwood ash veneer from the Wilkhahn wood color-stain samples
- With straight wood edging, color-matched as far as possible with the veneer

Variant 2

- Walnut, smoked oak or black walnut veneer with sapwood based on the Wilkhahn wood color-stain samples
- With straight wood edging, color-matched as far as possible with the veneer



Symmetrically curved wood edging

Table top group 6 – varnished

- Table top thickness 25 mm
- opaque white or black varnish Edging
- color-matched with the table top



Symmetrically curved wood edging

Accessories

Cable channel

Cable channel made of aluminum extruded profile, retractable, coated black.

Cable lids, opening lengthwise and across

Cable lid opens lengthwise, beveled on both of the long sides (can be used on both sides), gas-lift-damped automatic opening mechanism, cable lid on both sides in the same color and material as the table.

Cable lid: 300×165 mm

Cable lid opens crosswise, beveled on one long side (can be used on one side), gas-lift-damped automatic opening mechanism, the cable lid is in the same material and color on both sides.

Cable lid: 300×165 mm.

Basic cable lid

Aluminum installation frame with cable lid and brushed profile. Cable lid: 300×120 mm.

Vertical cable management

Flexible black cable sheath. Length including table attachment and floor panel approx. 75 cm.

Clips for holding the plastic cables, screwed to the frame leg, detachable cover made of sheet steel coated in signal white, black with a textured matte finish or dark gray with a textured matte finish.

Standards

The Graph tables comply with the DIN EN127 and the ANSI / BIFMAX5.5 standards.

Subject to change.

Graph. Environmental product information.

Materials.

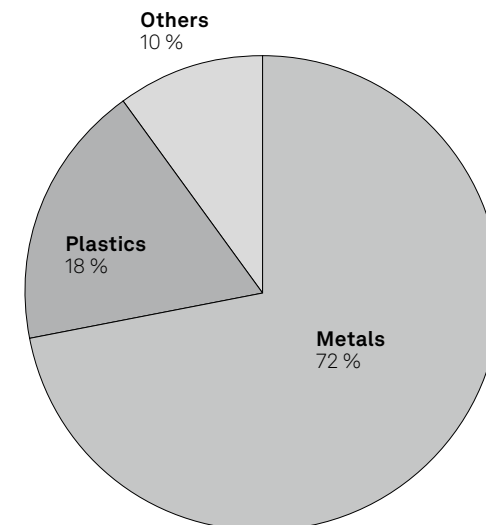
Material composition for the 301/5 Graph conference chair model, Powder-coated four star base on glides with a fabric cover.



	[kg]	[%]
Metals	11.20	72
Steel	5.00	32
Aluminum	6.10	39
Zinc	0.70	1
Plastics	2.80	18
Polypropylene (PP)	0.10	1
Polyamide (PA)	0.00	0
Polyurethane (PUR)	2.50	16
Polyester	0.20	1
Others	1.50	10
Total weight	15.50	100
Recycling proportion	8.90	57
Recycling capabilit	15.00	97

Not recyclable: Cover fabric

Materials are subject to stringent checks. As part of an ABC analysis, the materials are checked to ensure they are environmentally friendly and not harmful to health. Prohibited chemicals are not used in the product at all. All feedstock is listed in a register of hazardous substances. This helps to minimize the use or allow the substitution of any potentially harmful materials.



Graph. Environmental product information.



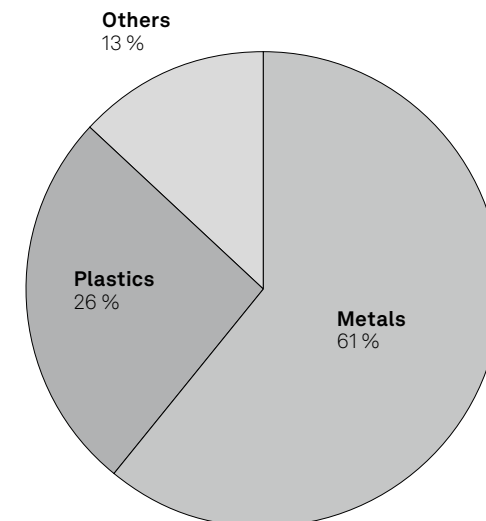
Materials.

Material composition for the 301/7 Graph conference chair model, Star base with chrome-plated casters, chrome gas lift, leather cover, armrests.

	[kg]	[%]
Metals	13.10	61
Steel	7.38	34
Aluminum	5.59	26
Zinc	0.15	1
Plastics	5.50	26
Polyamide (PA)	0.65	3
Polypropylene (PP)	0.04	0
Polyurethane (PUR)	4.60	22
Polyester	0.20	1
Others	2.80	13
Cover (wool, leather)	2.80	13
Total weight	21.40	100
Recycling proportion	9.50	45
Recycling capability	20.60	96

Not recyclable: Leather

Materials are subject to stringent checks. As part of an ABC analysis, the materials are checked to ensure they are environmentally friendly and not harmful to health. Prohibited chemicals are not used in the product at all. All feedstock is listed in a register of hazardous substances. This helps to minimize the use or allow the substitution of any potentially harmful materials.



Graph. Environmental product information.



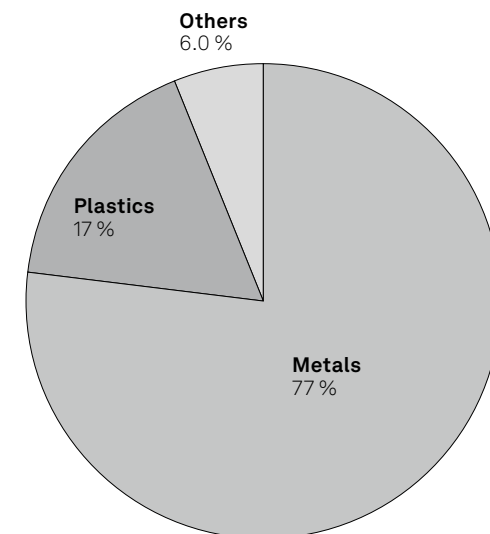
Materials.

Material composition for the 301/8 Graph conference chair model, Matte-polished five star base with casters, matte-polished armrests, Credo fabric

	[kg]	[%]
Metals	17.80	77
Aluminum	6.60	29
Steel	11.10	48
Zinc	0.10	0
Plastics	3.80	17
Polypropylene (PP)	0.10	0
Polyamide (PA)	0.60	3
Polyurethane (PUR)	2.90	13
Polyester	0.20	1
Others	1.30	6
Cover (wool, leather)	1.30	6
Total weight	22.90	100
Recycling proportion	12.40	54
Recycling capability	22.30	97

Not recyclable: Cover fabric

Materials are subject to stringent checks. As part of an ABC analysis, the materials are checked to ensure they are environmentally friendly and not harmful to health. Prohibited chemicals are not used in the product at all. All feedstock is listed in a register of hazardous substances. This helps to minimize the use or allow the substitution of any potentially harmful materials.



Graph. .

Auszeichnungen



Not all the awards apply to all variants.

Product certificates/product standards



DIN EN 16139 and DIN EN 1729 ANSI/BIFMA X5.5 Not all certificates/standards apply to all variants.

Company's certificates, memberships



Wilkhahn and sustainability.



In over 100 years of its corporate history, Wilkhahn can look back on a sustainability philosophy that has grown over decades. Aspects such as durability, social fairness, environmental responsibility and cultural orientation have been evolving as corporate principles since the 1950s. Wilkhahn today is regarded internationally as a model of excellence, not only on account of its products but also because of its modern corporate philosophy. This is because the company realized early on that sustainable design should embrace environmental aspects, improve social relationships and define the cultural role of a company. This approach to the way we do business creates a bond between us and our customers throughout the world. There is surely no more rewarding task than working together for a successful future that is worth living in.

↓ [Current sustainability report with environmental statement](#)



For further information please contact us!

Wilkhahn



Wilkening + Hahne GmbH+Co.KG

Fritz-Hahne-Str. 8
31848 Bad Münde
Germany
Tel.: +49 5042 999 100
contact@wilkhahn.de
www.wilkhahn.com



Roof of one of the four pavilions,
which were designed by architect
Frei Otto, on the Wilkhahn site.

Photo: Klemens Ortmeier