

Wilkhahn



Aline.



## Aline

Wilkhahn's Aline product family by Andreas Störiko sets standards in multipurpose rooms and informal communication spaces. The seat and backrest frame of high-strength plastic and a stylish sled base of bright chrome-plated round steel form a stable, compact and lightweight body. The chair has an elastic structure and color-matched cover fashioned from transparent high-performance fabric. Add the good airflow at the rear and Aline is very relaxing and comfortable to sit on. The clever part is that the seat and backrest frame in black, gray and white have a sled base. As a result, the chairs stack neatly, compactly and safely and don't damage the covers. Its integrated design that appears pared down to two materials makes Aline ideal for restaurants, conference rooms, lecture theaters, waiting rooms, customer service areas or homes.

Design: Andreas Störiko

The sled-base chairs are so transparent that they don't detract from a room's architectural character, even when the space is full of furniture. Because of their sled-base design, up to 15 of the chairs are compact and safe to stack free-standing. They are easy to handle, space-saving to stow away and therefore a bonus in terms of facility management. Aline multipurpose chairs 230/2 with Timetable table 610/00:



High-quality, innovative, robust materials (e.g. through-dyed frames) and the timeless design make the Aline range is future proof and durable.  
Aline multipurpose chairs 230/1 and 230/2:



A versatile sled-base chair, ideal for meetings, seminars and events. It's impressive for its light weight and compact stacking capability with just 20 mm more space taken per chair. With 15 chairs stacked, the total height is just 106 cm. Aline multipurpose chairs 230/1:





Up to 15 chairs, (and with a stacking trolley, even up to 20 with or without armrests) are easy to stack on top of each other in a form-fitting manner thanks to their low weight. And each chair adds just 20 mm to the height of the stack. The curved part of the backrest at the top acts as a handle. And cut-out sections at the sides where the seat frame bends make it easy to pull the chair forward and lift off the stack.



As an accessory, the multipurpose chair comes with an inline connector made of shot-blasted, matte chrome-plated flat steel that automatically snaps back. Just fold it out, add the next chair and you're done. Rows can also be linked with special glides that align and affix the models without armrests or alternately with armrests. This is possible without any loose parts or negative impact on stacking capabilities.

## Aline. Overview of models.



**230/1**  
Multipurpose chair, without armrests,  
optionally with seat cushioning



**230/2**  
Multipurpose chair, with armrests,  
optionally with seat cushioning



**232**  
Four-wheeled trolley



**231**  
Retractable inline connector



**238**  
Rows can only be connected with  
multipurpose glides


# Aline. Designs.

230/1, 230/2



Retractable inline connector  
made of matte chrome-plated steel.  
Four-wheeled trolley coated black.

The digital sample colors differ from the originals.

 You can find all upholstery material  
and more colors in our material library.

## Frame



Glanzverchromt

## Seat and backrest frame



Coated white  
(RAL 9016)



Coated black  
(RAL 9011)

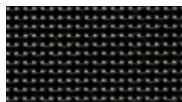


Coated gray with a  
textured matte  
finish (Pantone Cool  
Gray 10 C)

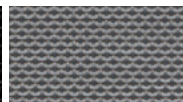
## Seat and backrest cover



white



black



gray



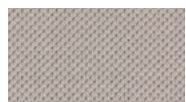
copper-black\*



silver-black\*

\* Only with black seat and backrest frame

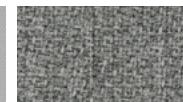
## Cover materials optional seat cushioning



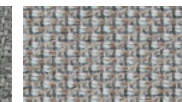
37 Atlantic



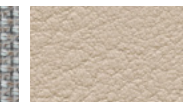
47 Nova



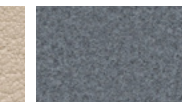
54 Step/Step  
Melange



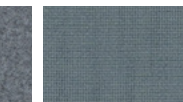
56 Cyber



58 Evida



60 Blazer



66 Lano



68 Remix



91 Steelcut Trio/  
Quartet

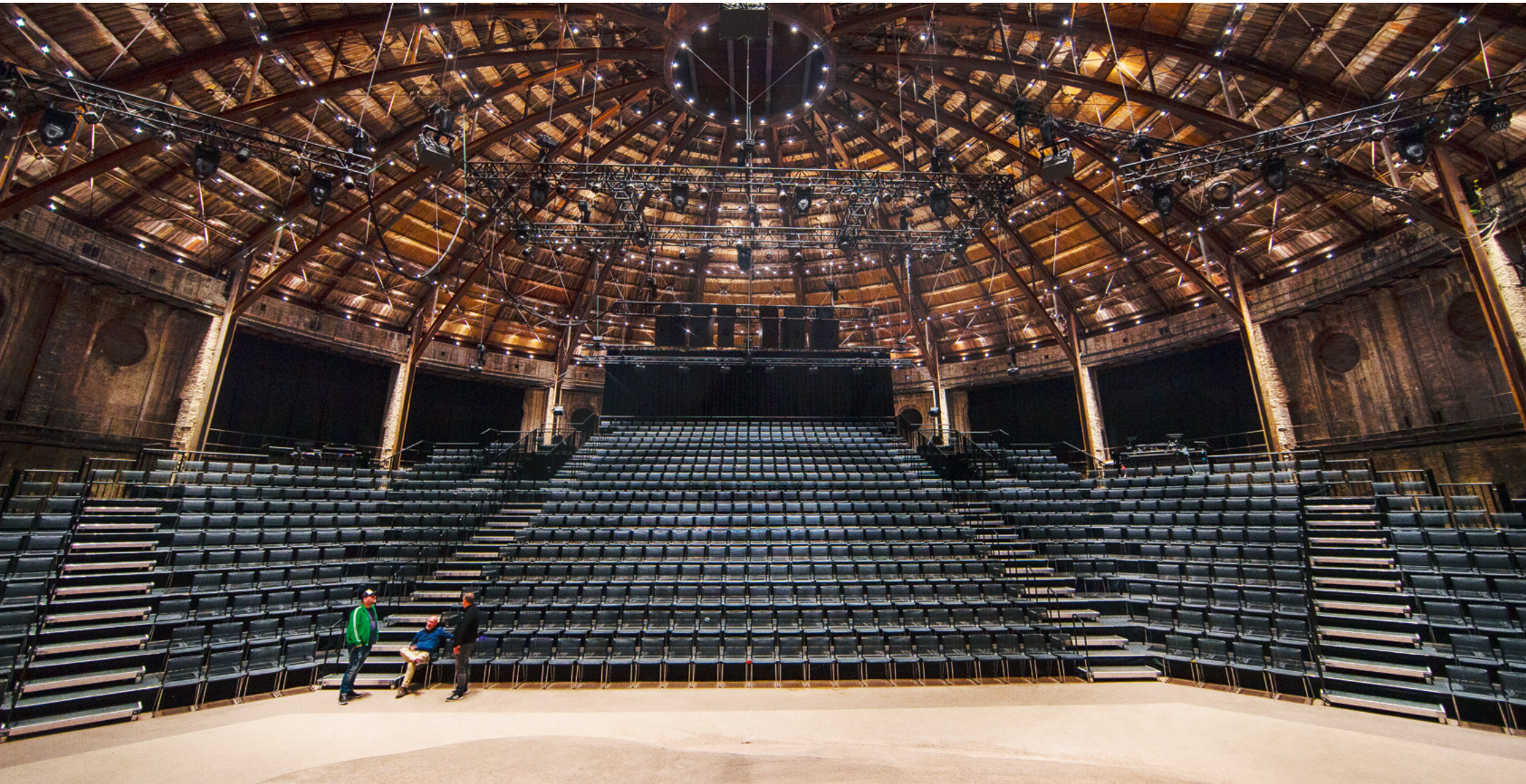
Aline. Reference projects. Model 238/02. Building: CCC Shoes and Bags, Polkowice, Poland. Photo: Szymon Polański



Aline. Reference projects. Models 230/01 and 230/02. Building: Royal Stables, Leibniz University, Hanover, Germany. Photo: Frank Schinski.



Aline. Reference projects. Model 230/01. Building: Gasvaerk Theater, Copenhagen, Denmark. Photo:: Louise Stickland – courtesy of Kinesys

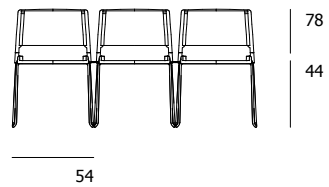
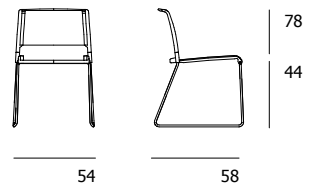


Aline. Reference projects. Modell 230/02, building: The UN's Room XIX plenary chamber, Spain Photo: Studio PEIA

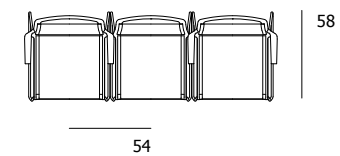
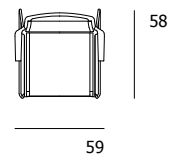
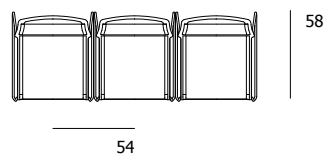
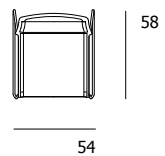
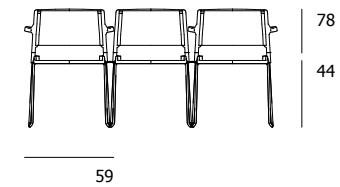
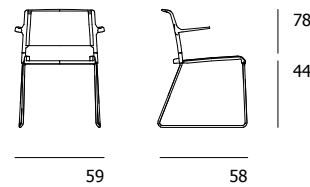


## Aline. Models and dimensions.

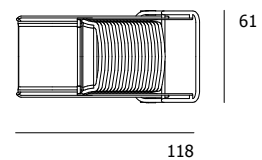
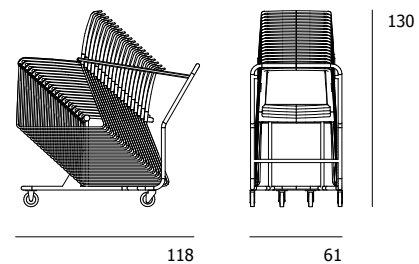
230/01



230/02



232



## Aline Chairs. Technical details.

Lightweight, stackable multipurpose chair. Aula is superbly comfortable, however long you sit on it, thanks to its shape, elasticity, and ergonomic form of the plastic seat shells. Four colors and four upholstery types tap into a wide range of options for features and designs in conference and multipurpose spaces, meeting areas, cafeterias, seminar and conference centers or co-working spaces.

### Frame/armrests

- Made of through-dyed, fiberglass-reinforced ultramid, color-matched with the seat shell in white, black, gray or gray-beige
- Optionally with armrests in the same material and color, retrofittable on request
- With multipurpose glides, optionally with felt glides

### Seat and backrest

- Unitary, ergonomically molded seat and backrest shell made of through-dyed, fiberglass-reinforced polypropylene
- Similarly to the frame and armrests, in white, black, gray or gray-beige
- Model 238/11 with seat cushioning
- Model 238/12 with padding on the inside (unitary seat and backrest cushioning) as a replaceable upholstery element made of plywood and breathable polyurethane foam.
- Model 238/13 with fully upholstered and covered plywood shell; unitary seat and backrest cushioning with breathable polyurethane foam.

### Accessories

- Variable pull-out inline connector 190 for linking chairs (can be retrofitted)
- Optionally without armrests, with armrests or in combination with frames with and without armrests
- Made of bent steel, zinc-plated in blue, with mount made of fiberglass-reinforced polyamide in anthracite.
- Writing tablet attachable to the armrest (can be retrofitted)
- Fold-up panel made of HPL in black, connector made of black plastic
- Chairs can still be stacked.
- Inline connectors combined with the writing tablet on request

### Dimensions, weights

Width without armrests 55 cm, with armrests 63 cm, armrest height 67 cm, center-to-center distances in linkage options combined without/without armrests 55 cm, with/without armrests 60 cm, with/with armrests 64 cm.  
Weight (without upholstery):  
6 kg without armrests,  
6.75 kg with armrests

Maximum number of chairs that can be stacked:  
15 free-standing,  
10 on a four-wheeled trolley,

height between chairs when stacked  
90 mm

### Standards

The stackable Aula chairs comply with the DIN EN16139-L1 and ANSI/BIFMA X5.1 office-chair standard. Compliant with the DIN EN16139-L1 office-chair standard, up to 10 multipurpose chairs can be stacked vertically.



### Please note

Stacking the models with plastic frames chairs can cause shine and pressure marks.

## Aline. Certificates/awards.

### Awards



Not all awards apply to all variants.

### Product certificates/product standards



DIN EN 16139-L1 ANSI/BIFMA X5.1

Not all certificates/standards apply to all types.

### Company's certificates, memberships



## Wilkhahn and sustainability.



In over 100 years of its corporate history, Wilkhahn can look back on a sustainability philosophy that has grown over decades. Aspects such as durability, social fairness, environmental responsibility and cultural orientation have been evolving as corporate principles since the 1950s. Wilkhahn today is regarded internationally as a model of excellence, not only on account of its products but also because of its modern corporate philosophy. This is because the company realized early on that sustainable design should embrace environmental aspects, improve social relationships and define the cultural role of a company. This approach to the way we do business creates a bond between us and our customers throughout the world. There is surely no more rewarding task than working together for a successful future that is worth living in.

↓ [Current sustainability report with environmental statement](#)



For further information please contact us!

# Wilkhahn



## Wilkening + Hahne GmbH+Co.KG

Fritz-Hahne-Str. 8  
31848 Bad Münder  
Germany  
Tel.: +49 5042 999 100  
contact@wilkhahn.de  
www.wilkhahn.com



Roof of one of the four pavilions, which were designed by architect Frei Otto, on the Wilkhahn site.

Photo: Klemens Ortmeyer